

NOTICE!!

These documents have been scanned!

Do not place un-scanned documents beneath this notice!

Do not remove this notice from this file!

GPO Jacket No. 560-102
Print Order 61540
Rise Business Services, LLC
Job=AZ15 5/13/2019



Box Number= AZ15042



Claim Begin-End: AMC420234-AMC420255

1 Initial Receipt



AZ15042-2

AMC420196-AMC421069

United States Department of the Interior
Bureau of Land Management
LANDS/RECREATION & PLANNING
ONE N CENTRAL AVE
PHOENIX, AZ 85004 -2203
Phone: 602-417-9200

Receipt

No:

2704163

Transaction #: 2786159	ENTERED INTO COMPUTER
Date of Transaction: 12/07/2012	
CUSTOMER:	JAN 31 2013 <i>pb</i>
COPPER FOX SOMBRERO BUTTE CO 650 340 12 AVE SW CALGARY AB,NS T2R 1L5 CA	

LINE #	QTY	DESCRIPTION	REMARKS	UNIT PRICE	TOTAL
1	22.00	LOCATABLE MINERALS / MINING CLAIMS- NEW,UNADJUD, ONE OR MORE AUTH NOS / NEW MINING CLAIM PROCESSING FEE \$15 CASES: AMC420234/\$15.00, AMC420235/\$15.00, AMC420236/\$15.00, AMC420237/\$15.00, AMC420238/ \$15.00, AMC420239/\$15.00, AMC420240/\$15.00, AMC420241/\$15.00, AMC420242/\$15.00, AMC420243/ \$15.00, AMC420244/\$15.00, AMC420245/\$15.00, AMC420246/\$15.00, AMC420247/\$15.00, AMC420248/ \$15.00, AMC420249/\$15.00, AMC420250/\$15.00, AMC420251/\$15.00, AMC420252/\$15.00, AMC420253/ \$15.00, AMC420254/\$15.00, AMC420255/\$15.00		- n/a -	330.00
2	22.00	LOCATABLE MINERALS / MINING CLAIMS- NEW,UNADJUD, ONE OR MORE AUTH NOS / NEW MINING CLAIM LOCATION FEE \$34 CASES: AMC420234/\$34.00, AMC420235/\$34.00, AMC420236/\$34.00, AMC420237/\$34.00, AMC420238/ \$34.00, AMC420239/\$34.00, AMC420240/\$34.00, AMC420241/\$34.00, AMC420242/\$34.00, AMC420243/ \$34.00, AMC420244/\$34.00, AMC420245/\$34.00, AMC420246/\$34.00, AMC420247/\$34.00, AMC420248/ \$34.00, AMC420249/\$34.00, AMC420250/\$34.00, AMC420251/\$34.00, AMC420252/\$34.00, AMC420253/ \$34.00, AMC420254/\$34.00, AMC420255/\$34.00		- n/a -	748.00
3	22.00	LOCATABLE MINERALS / MINING CLAIMS- NEW,UNADJUD, ONE OR MORE AUTH NOS / NEW MINING CLAIM MAINT FEE \$140 CASES: AMC420234/\$140.00, AMC420235/\$140.00, AMC420236/\$140.00, AMC420237/\$140.00, AMC420238/ \$140.00, AMC420239/\$140.00, AMC420240/\$140.00, AMC420241/\$140.00, AMC420242/\$140.00, AMC420243/ \$140.00, AMC420244/\$140.00, AMC420245/\$140.00, AMC420246/\$140.00, AMC420247/\$140.00, AMC420248/ \$140.00		- n/a -	3080.00

\$140.00, AMC420249/\$140.00, AMC420250/\$140.00, AMC420251/\$140.00, AMC420252/\$140.00, AMC420253/ \$140.00, AMC420254/\$140.00, AMC420255/\$140.00			
---	--	--	--

TOTAL:	\$4,158.00
---------------	-------------------

PAYMENT INFORMATION			
---------------------	--	--	--

1	AMOUNT:	4158.00	POSTMARKED:	N/A
	TYPE:	CHECK	RECEIVED:	12/07/2012
	CHECK NO:	1001		
	NAME:	COPPER FOX SOMBRERO BUTTE CO 650 340 12 AVE SW CALGARY AB CANADA NS T2R 1L5		

REMARKS

This receipt was generated by the automated BLM Collections and Billing System and is a paper representation of a portion of the official electronic record contained therein.

NOTICE!!

These documents have been scanned!

Do not place un-scanned documents beneath this notice!

Do not remove this notice from this file!

GPO Jacket No. 560-102
Print Order 61540
Rise Business Services, LLC
Job=AZ15 5/13/2019



Box Number= AZ15042



Claim Begin-End: AMC420234-AMC420255

2 Correspondence



AZ15042-2

AMC420196-AMC421069

**NO
DOCUMENTS
FOUND**

NO DOCUMENTS FOUND
NO DOCUMENTS FOUND

NOTICE!!

These documents have been scanned!

Do not place un-scanned documents beneath this notice!

Do not remove this notice from this file!

GPO Jacket No. 560-102
Print Order 61540
Rise Business Services, LLC
Job=AZ15 5/13/2019



Box Number= AZ15042



Claim Begin-End: AMC420234-AMC420255

3 Transfers



AZ15042-2

AMC420196-AMC421069

**NO
DOCUMENTS
FOUND**

NO DOCUMENTS FOUND
NO DOCUMENTS FOUND

NOTICE!!

These documents have been scanned!

Do not place un-scanned documents beneath this notice!

Do not remove this notice from this file!

GPO Jacket No. 560-102
Print Order 61540
Rise Business Services, LLC
Job=AZ15 5/13/2019



Box Number= AZ15042



Claim Begin-End: AMC420234-AMC420255

4 Miscellaneous



AZ15042-2 AMC420196-AMC421069

**NO
DOCUMENTS
FOUND**

NO DOCUMENTS FOUND
NO DOCUMENTS FOUND

NOTICE!!

These documents have been scanned!

Do not place un-scanned documents beneath this notice!

Do not remove this notice from this file!

GPO Jacket No. 560-102
Print Order 61540
Rise Business Services, LLC
Job=AZ15 5/13/2019



Box Number= AZ15042



Claim Begin-End: AMC420234-AMC420255

5 Annual Filings



AZ15042-2

AMC420196-AMC421069

_____, 2018

United States Department of Interior
Bureau of Land Management
Records Section
One North Central Avenue
Suite 800
Phoenix, Arizona 85011

Notice of Intent
ANNUAL CLAIM MAINTENANCE FEES for 2018/2019,
By DESERT FOX SOMBRERO BUTTE CO

To Whom It May Concern:

The Final Rule as published in the Federal Register implements provisions of the Interior Department and related agencies, *that a Statutorily Authorized Adjustment effective June 30, 2014 that requires an annual rental fee of \$155.00* for each unpatented mining claim and site located and held under the General Mining Law of 1872.

This will serve as notice that **DESERT FOX SOMBRERO BUTTE CO**, whose address for purposes of this filing is 11280 North Shadow Vista Place Tucson, Arizona 85742 intends to hold the mining claims and /or mill sites described in **Exhibit "A"** attached hereto for the assessment years **2018/2019**, by payment of the annual claim maintenance fee of **\$155.00** per claim or site. Payment of **\$11,935.00** is made herewith for such assessment years for each of the unpatented lode claims and sites. The name, BLM serial number, book and page or index number of recording of the location notice is official records of Pinal County, Arizona, of which are set forth in **Exhibit "A"** attached hereto and by this reference incorporated herein.

Sincerely,

Daniel L Mead
Cornerstone Lands LLC
Agent for: DESERT FOX SOMBRERO BUTTE CO

Telephone 520-419-2622

Cc: file

	371533
	396287
	371533
	357560
	396287
	357853
	420234
	357871
	357873
	358745
	358746
	358032
	359987
	360058

PHOENIX, ARIZONA
2018 JUL 25 A 9:14

4219736

ENTERED
JUL 30 2018
BY: Ram

DESERT FOX SOMBRERO BUTTE CO

Notice of Intent to hold the foregoing unpatented Mining Claims for 2018/2019:

NO.	AMC	Claim Name	County	Book	Fee Number
1	371533	7 MAX F1	Pinal	2006	27209
2	371534	MAX F2	Pinal	2006	27210
3	371535	MAX F3	Pinal	2006	27211
4	371536	MAX F4	Pinal	2006	27212
5	371537	MAX F5	Pinal	2006	27213
6	371538	MAX 5	Pinal	2006	31771
7	371539	MAX 6	Pinal	2006	31772
8	371540	MAX 7	Pinal	2006	31773
9	371541	MAX 8	Pinal	2006	31774
10	371542	MAX 9	Pinal	2006	31775
11	371543	MAX 10	Pinal	2006	31776
12	371544	MAX 11	Pinal	2006	31777
13	371545	MAX 12	Pinal	2006	31778
14	371546	MAX 13	Pinal	2006	31779
15	371547	MAX 14	Pinal	2006	31780
16	371548	MAX 15	Pinal	2006	31781
17	371549	MAX 16	Pinal	2006	31782
18	371550	MAX 17	Pinal	2006	31783
19	371551	MAX 18	Pinal	2006	31784
20	371552	MAX 19	Pinal	2006	31785
21	371553	MAX 20	Pinal	2006	31786
22	371554	MAX 21	Pinal	2006	31787
23	371555	MAX 22	Pinal	2006	31788
24	371556	MAX 23	Pinal	2006	31789
25	371557	MAX 24	Pinal	2006	31790
26	371558	MAX 25	Pinal	2006	31791
27	371559	MAX 26	Pinal	2006	31792
28	371560	MAX 27	Pinal	2006	31793
29	371561	MAX 28	Pinal	2006	31794
30	371562	MAX 29	Pinal	2006	31795
31	371563	MAX 30	Pinal	2006	31796
32	371564	MAX 31	Pinal	2006	31797
33	396287	7 AMY 7	Pinal	2008	119817
34	396288	AMY 9	Pinal	2008	119819
35	396289	AMY 11	Pinal	2008	119821
36	396290	AMY 13	Pinal	2008	119823

37	396291	7	AMY 15	Pinal	2008	119825
38	396292	J	AMY 17	Pinal	2008	119827
39	357560	7	Magma Chief Ext.	Pinal	2003	20795
40	357561		Battle Axe	Pinal	2003	20796
41	357562	J	Kin Sabie	Pinal	2003	20794
42	357853	J	Sunset	Pinal	2003	26072
43	357854	J	Jewel	Pinal	2003	26073
44	357871	←	Hot Foot Johnny	Pinal	2003	27362
45	357873	7	Bagdad MS3601	Pinal	2003	29683
46	357874	J	Copper Reef No. 2	Pinal	2003	29682
47	358745	7	Copper Ridge	Pinal	2003	80487
48	358746	J	Copper Ridge 1	Pinal	2003	80488
49	358032	←	Lookout MS3601	Pinal	2003	53907
50	357875	←	Sunday	Pinal	2003	29684
51	359987	7	Sunset 1	Pinal	2004	10787
52	359988		Sunset 2	Pinal	2004	10788
53	359989	J	Sunset 3	Pinal	2004	10789
54	360058	←	Copper Triangle	Pinal	2004	67577
55	359990	←	Red Mountain	Pinal	2004	10786
56	420234	7	AMY 1	Pinal	2012	103555
57	420235		AMY 2	Pinal	2012	103556
58	420236		AMY 3	Pinal	2012	103557
59	420237		AMY 4	Pinal	2012	103558
60	420238		AMY 5	Pinal	2012	103559
61	420239		AMY 6	Pinal	2012	103560
62	420240		AMY 8	Pinal	2012	103561
63	420241		AMY 10	Pinal	2012	103562
64	420242		AMY 12	Pinal	2012	103563
65	420243		AMY 14	Pinal	2012	103564
66	420244		AMY 16	Pinal	2012	103565
67	420245		AMY 18	Pinal	2012	103566
68	420246		AMY 19	Pinal	2012	103567
69	420247		AMY 20	Pinal	2012	103568
70	420248		AMY 21	Pinal	2012	103569
71	420249		AMY 22	Pinal	2012	103570
72	420250		AMY 23	Pinal	2012	103571
73	420251		AMY 24	Pinal	2012	103572
74	420252		AMY 25	Pinal	2012	103573
75	420253		AMY 26	Pinal	2012	103574
76	420254		AMY 27	Pinal	2012	103575
77	420255	J	AMY 28	Pinal	2012	103576

Total number of unpatented mining claims = 77

United States Department of the Interior
Bureau of Land Management
 DIV OF LANDS, MINRLS & ENERGY
 ONE N CENTRAL AVE
 PHOENIX, AZ 85004 -4427
 Phone: 602-417-9200

Receipt

No: 4219736

Transaction #: 4334925	
Date of Transaction: 07/26/2018	
CUSTOMER:	
DESERT FOX SOMBRERO BUTTE CO 11280 N SHADOW VISTA PL ORO VALLEY, AZ 85742-9678 US	

LINE #	QTY	DESCRIPTION	REMARKS	UNIT PRICE	TOTAL
1	1.00	LOCATABLE MINERALS / MINING CLAIMS- NOT NEW-UNADJUD, ONE AUTH NO. ONLY / MINING CLAIM MONEY RECEIVED CASES: AMC371533/\$11935.00	MAINT 2019/77	- n/a -	11935.00
TOTAL:					\$11,935.00

PAYMENT INFORMATION			
1	AMOUNT:	11935.00	POSTMARKED: N/A
	TYPE:	CHECK	RECEIVED: 07/26/2018
	CHECK NO:	2085	
	NAME:	DESERT FOX SOMBRERO BUTTE CO STE 650 - 340 12 AVE SW CALGARY AB T2R 1L5 CA	

REMARKS

This receipt was generated by the automated BLM Collections and Billing System and is a paper representation of a portion of the official electronic record contained therein.

371533
396287
357560
357853
358032
358746
357871
359987
360058

357873

420234

8-1 - , 2017

United States Department of Interior
Bureau of Land Management
Records Section
One North Central Avenue
Suite 800
Phoenix, Arizona 85011

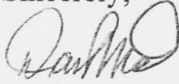
Notice of Intent
ANNUAL CLAIM MAINTENANCE FEES for 2017/2018,
By DESERT FOX SOMBRERO BUTTE CO

To Whom It May Concern:

The Final Rule as published in the Federal Register implements provisions of the Interior Department and related agencies, *that a Statutorily Authorized Adjustment effective June 30, 2014 that requires an annual rental fee of \$155.00* for each unpatented mining claim and site located and held under the General Mining Law of 1872.

This will serve as notice that **DESERT FOX SOMBRERO BUTTE CO**, whose address for purposes of this filing is 11280 North Shadow Vista Place Tucson, Arizona 85742 intends to hold the mining claims and /or mill sites described in **Exhibit "A"** attached hereto for the assessment years **2017/2018**, by payment of the annual claim maintenance fee of **\$155.00** per claim or site. Payment of **\$11,935.00** is made herewith for such assessment years for each of the unpatented lode claims and sites. The name, BLM serial number, book and page or index number of recording of the location notice is official records of Pinal County, Arizona, of which are set forth in **Exhibit "A"** attached hereto and by this reference incorporated herein.

Sincerely,



Daniel L Mead
Cornerstone Lands LLC
Agent for: DESERT FOX SOMBRERO BUTTE CO

Telephone 520-419-2622

Cc: file

RECEIVED
PHOENIX, ARIZONA
2017 AUG 23 A 10:43
OFFICE

ENTERED
AUG 25 2017
BY: RAM

DESERT FOX SOMBRERO BUTTE CO

Notice of Intent to hold the foregoing unpatented Mining Claims for 2017/2018:

NO.	AMC	Claim Name	County	Book	Fee Number
1	371533	7 MAX F1	Pinal	2006	27209
2	371534	MAX F2	Pinal	2006	27210
3	371535	MAX F3	Pinal	2006	27211
4	371536	MAX F4	Pinal	2006	27212
5	371537	MAX F5	Pinal	2006	27213
6	371538	MAX 5	Pinal	2006	31771
7	371539	MAX 6	Pinal	2006	31772
8	371540	MAX 7	Pinal	2006	31773
9	371541	MAX 8	Pinal	2006	31774
10	371542	MAX 9	Pinal	2006	31775
11	371543	MAX 10	Pinal	2006	31776
12	371544	MAX 11	Pinal	2006	31777
13	371545	MAX 12	Pinal	2006	31778
14	371546	MAX 13	Pinal	2006	31779
15	371547	MAX 14	Pinal	2006	31780
16	371548	MAX 15	Pinal	2006	31781
17	371549	MAX 16	Pinal	2006	31782
18	371550	MAX 17	Pinal	2006	31783
19	371551	MAX 18	Pinal	2006	31784
20	371552	MAX 19	Pinal	2006	31785
21	371553	MAX 20	Pinal	2006	31786
22	371554	MAX 21	Pinal	2006	31787
23	371555	MAX 22	Pinal	2006	31788
24	371556	MAX 23	Pinal	2006	31789
25	371557	MAX 24	Pinal	2006	31790
26	371558	MAX 25	Pinal	2006	31791
27	371559	MAX 26	Pinal	2006	31792
28	371560	MAX 27	Pinal	2006	31793
29	371561	MAX 28	Pinal	2006	31794
30	371562	MAX 29	Pinal	2006	31795
31	371563	MAX 30	Pinal	2006	31796
32	371564	7 MAX 31	Pinal	2006	31797
33	396287	7 AMY 7	Pinal	2008	119817
34	396288	AMY 9	Pinal	2008	119819
35	396289	AMY 11	Pinal	2008	119821
36	396290	7 AMY 13	Pinal	2008	119823

RECEIVED
 MARIQUETA OFFICE
 2017 JUN 23 A 10:43

37	396291	AMY 15	Pinal	2008	119825
38	396292	AMY 17	Pinal	2008	119827
39	357560	Magma Chief Ext.	Pinal	2003	20795
40	357561	Battle Axe	Pinal	2003	20796
41	357562	Kin Sabie	Pinal	2003	20794
42	357853	Sunset	Pinal	2003	26072
43	357854	Jewel	Pinal	2003	26073
44	357871	Hot Foot Johny	Pinal	2003	27362
45	357873	Bagdad MS3601	Pinal	2003	29683
46	357874	Copper Reef No. 2	Pinal	2003	29682
47	358745	Copper Ridge	Pinal	2003	80487
48	358746	Copper Ridge 1	Pinal	2003	80488
49	358032	Lookout MS3601	Pinal	2003	53907
50	357875	Sunday	Pinal	2003	29684
51	359987	Sunset 1	Pinal	2004	10787
52	359988	Sunset 2	Pinal	2004	10788
53	359989	Sunset 3	Pinal	2004	10789
54	360058	Copper Triangle	Pinal	2004	67577
55	359990	Red Mountain	Pinal	2004	10786
56	420234	AMY 1	Pinal	2012	103555
57	420235	AMY 2	Pinal	2012	103556
58	420236	AMY 3	Pinal	2012	103557
59	420237	AMY 4	Pinal	2012	103558
60	420238	AMY 5	Pinal	2012	103559
61	420239	AMY 6	Pinal	2012	103560
62	420240	AMY 8	Pinal	2012	103561
63	420241	AMY 10	Pinal	2012	103562
64	420242	AMY 12	Pinal	2012	103563
65	420243	AMY 14	Pinal	2012	103564
66	420244	AMY 16	Pinal	2012	103565
67	420245	AMY 18	Pinal	2012	103566
68	420246	AMY 19	Pinal	2012	103567
69	420247	AMY 20	Pinal	2012	103568
70	420248	AMY 21	Pinal	2012	103569
71	420249	AMY 22	Pinal	2012	103570
72	420250	AMY 23	Pinal	2012	103571
73	420251	AMY 24	Pinal	2012	103572
74	420252	AMY 25	Pinal	2012	103573
75	420253	AMY 26	Pinal	2012	103574
76	420254	AMY 27	Pinal	2012	103575
77	420255	AMY 28	Pinal	2012	103576

Total number of unpatented mining claims = 77

NO. OF CLAIMS 77
 AMOUNT 11935.00
 RECEIPT NO. _____
 .NIT. PBR

** BLM-ASO**

RECEIVED OFFICE

2011 AUG 23 AM 10 43

United States Department of the Interior
Bureau of Land Management
 DIV OF LANDS, MINRLS & ENERGY
 ONE N CENTRAL AVE
 PHOENIX, AZ 85004 -4427
 Phone: 602-417-9200

Receipt

No: 3952001

Transaction #: 4061732	
Date of Transaction: 08/23/2017	
CUSTOMER:	
DESERT FOX SOMBRERO BUTTE CO 11280 N SHADOW VISTA PL ORO VALLEY, AZ 85742-9678 US	

LINE #	QTY	DESCRIPTION	REMARKS	UNIT PRICE	TOTAL
1	1.00	LOCATABLE MINERALS / MINING CLAIMS- NOT NEW-UNADJUD, ONE AUTOMATIC MINING CLAIM MONEY RECEIV CASES: AMC371533/\$11935.00	USE MONEY FROM OWNER OF CLAIM.	- n/a -	11935.00
				TOTAL:	\$11,935.00

PAYMENT ID		AMOUNT:	TYPE:	CHECK NO:	NAME:	RECORDED:	RECEIVED:
1		11935.00	CHECK	2083	DESERT FOX SOMBRERO BUTTE CO 11280 N SHADOW VISTA PL ORO VALLEY AZ 85742-9678 US	N/A	08/23/2017

REMARKS	

This receipt was generated by the automated BLM Collections and Billing System and is a paper representation of a portion of the official electronic record contained therein.

United States Department of the Interior
Bureau of Land Management
 BUSINESS & SUPPORT SVCS DIV
 ONE N CENTRAL AVE SUITE 800
 PHOENIX, AZ 85004 -4427
 Phone: 602-417-9200

Receipt



No: 3945925

Transaction #: 4055626	
Date of Transaction: 08/20/2017	
CUSTOMER:	
F N HAWKINS 2222 W CLEARVIEW TRAIL ANTHEM, AZ 85086 US	

LINE #	QTY	DESCRIPTION	REMARKS	UNIT PRICE	TOTAL
1	1.00	LOCATABLE MINERALS / MINING CLAIMS- NOT NEW-UNADJUD, ONE AUTH NO. ONLY / MINING CLAIM MONEY RECEIVED CASES: AMC357561/\$155.00		- n/a -	155.00
TOTAL:					\$155.00

PAYMENT INFORMATION			
NOTE: Items will appear on credit card statement as "BLM O Mining Claim".			
1	AMOUNT:	155.00	POSTMARKED: N/A
	TYPE:	CREDIT CARD	RECEIVED: 08/20/2017
	NAME:	F N HAWKINS 2222 W CLEARVIEW TRAIL ANTHEM AZ 85086 US	
	CARD NO:	XXXXXXXXXXXX0411	AUTH CODE: 02017P
	NAME ON CARD:	F N HAWKINS	
	EXPIRES:	05/2020	
	SIGNATURE:		

REMARKS

This receipt was generated by the automated BLM Collections and Billing System and is a paper representation of a portion of the official electronic record contained therein.

AMC 357561 Battle Ax Payment Portal

*10/2/2017 REFUND PROCESSED
FOR MULTIPLE PAYMENT
ON AMC357561. Am*

371533
396287
357560
357853
357871
357873
358745
358746
358032
359987
360058

420234

7-16, 2016

United States Department of Interior
Bureau of Land Management
Records Section
One North Central Avenue
Suite 800
Phoenix, Arizona 85011

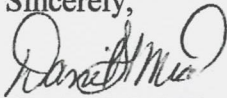
Notice of Intent
ANNUAL CLAIM MAINTENANCE FEES for 2016/2017,
By DESERT FOX SOMBRERO BUTTE CO

To Whom It May Concern:

The Final Rule as published in the Federal Register implements provisions of the Interior Department and related agencies, *that a Statutorily Authorized Adjustment effective June 30, 2014 that requires an annual rental fee of \$155.00* for each unpatented mining claim and site located and held under the General Mining Law of 1872.

This will serve as notice that **DESERT FOX SOMBRERO BUTTE CO**, whose address for purposes of this filing is 11280 North Shadow Vista Place Tucson, Arizona 85742 intends to hold the mining claims and /or mill sites described in **Exhibit "A"** attached hereto for the assessment years **2016/2017**, by payment of the annual claim maintenance fee of **\$155.00** per claim or site. Payment of **\$11,935.00** is made herewith for such assessment years for each of the unpatented lode claims and sites. The name, BLM serial number, book and page or index number of recording of the location notice is official records of Pinal County, Arizona, of which are set forth in **Exhibit "A"** attached hereto and by this reference incorporated herein.

Sincerely,



Daniel L Mead
Cornerstone Lands LLC
Agent for: DESERT FOX SOMBRERO BUTTE CO

Telephone 520-419-2622

Cc: file

RECEIVED
BLM AZ STATE OFFICE
2016 JUL 20 A 9:45
PHOENIX, ARIZONA

3610238

ENTERED
JUL 21 2016
BY: RAM

DESERT FOX SOMBRERO BUTTE CO

Notice of Intent to hold the foregoing unpatented Mining Claims for 2016/2017:

NO.	AMC	Claim Name	County	Book	Fee Number
1	371533	MAX F1	Pinal	2006	27209
2	371534	MAX F2	Pinal	2006	27210
3	371535	MAX F3	Pinal	2006	27211
4	371536	MAX F4	Pinal	2006	27212
5	371537	MAX F5	Pinal	2006	27213
6	371538	MAX 5	Pinal	2006	31771
7	371539	MAX 6	Pinal	2006	31772
8	371540	MAX 7	Pinal	2006	31773
9	371541	MAX 8	Pinal	2006	31774
10	371542	MAX 9	Pinal	2006	31775
11	371543	MAX 10	Pinal	2006	31776
12	371544	MAX 11	Pinal	2006	31777
13	371545	MAX 12	Pinal	2006	31778
14	371546	MAX 13	Pinal	2006	31779
15	371547	MAX 14	Pinal	2006	31780
16	371548	MAX 15	Pinal	2006	31781
17	371549	MAX 16	Pinal	2006	31782
18	371550	MAX 17	Pinal	2006	31783
19	371551	MAX 18	Pinal	2006	31784
20	371552	MAX 19	Pinal	2006	31785
21	371553	MAX 20	Pinal	2006	31786
22	371554	MAX 21	Pinal	2006	31787
23	371555	MAX 22	Pinal	2006	31788
24	371556	MAX 23	Pinal	2006	31789
25	371557	MAX 24	Pinal	2006	31790
26	371558	MAX 25	Pinal	2006	31791
27	371559	MAX 26	Pinal	2006	31792
28	371560	MAX 27	Pinal	2006	31793
29	371561	MAX 28	Pinal	2006	31794
30	371562	MAX 29	Pinal	2006	31795
31	371563	MAX 30	Pinal	2006	31796
32	371564	MAX 31	Pinal	2006	31797
33	396287	AMY 7	Pinal	2008	119817
34	396288	AMY 9	Pinal	2008	119819
35	396289	AMY 11	Pinal	2008	119821
36	396290	AMY 13	Pinal	2008	119823

RECEIVED
 DEPT. OF MINES
 STATE OFFICE
 2016 JUL 20 A 9:45

37	396291	AMY 15	Pinal	2008	119825
38	396292	AMY 17	Pinal	2008	119827
39	357560	Magma Chief Ext.	Pinal	2003	20795
40	357561	Battle Axe	Pinal	2003	20796
41	357562	Kin Sabie	Pinal	2003	20794
42	357853	Sunset	Pinal	2003	26072
43	357854	Jewel	Pinal	2003	26073
44	357871	Hot Foot Johnny	Pinal	2003	27362
45	357873	Bagdad MS3601	Pinal	2003	29683
46	357874	Copper Reef No. 2	Pinal	2003	29682
47	358745	Copper Ridge	Pinal	2003	80487
48	358746	Copper Ridge 1	Pinal	2003	80488
49	358032	Lookout MS3601	Pinal	2003	53907
50	357875	Sunday	Pinal	2003	29684
51	359987	Sunset 1	Pinal	2004	10787
52	359988	Sunset 2	Pinal	2004	10788
53	359989	Sunset 3	Pinal	2004	10789
54	360058	Copper Triangle	Pinal	2004	67577
55	359990	Red Mountain	Pinal	2004	10786
56	420234	AMY 1	Pinal	2012	103555
57	420235	AMY 2	Pinal	2012	103556
58	420236	AMY 3	Pinal	2012	103557
59	420237	AMY 4	Pinal	2012	103558
60	420238	AMY 5	Pinal	2012	103559
61	420239	AMY 6	Pinal	2012	103560
62	420240	AMY 8	Pinal	2012	103561
63	420241	AMY 10	Pinal	2012	103562
64	420242	AMY 12	Pinal	2012	103563
65	420243	AMY 14	Pinal	2012	103564
66	420244	AMY 16	Pinal	2012	103565
67	420245	AMY 18	Pinal	2012	103566
68	420246	AMY 19	Pinal	2012	103567
69	420247	AMY 20	Pinal	2012	103568
70	420248	AMY 21	Pinal	2012	103569
71	420249	AMY 22	Pinal	2012	103570
72	420250	AMY 23	Pinal	2012	103571
73	420251	AMY 24	Pinal	2012	103572
74	420252	AMY 25	Pinal	2012	103573
75	420253	AMY 26	Pinal	2012	103574
76	420254	AMY 27	Pinal	2012	103575
77	420255	AMY 28	Pinal	2012	103576

Total number of unpatented mining claims = 77

MAZ STATE OFFICE
 JUL 20 9 45 AM '12

**United States Department of the Interior
Bureau of Land Management**
DIV OF LANDS, MINRLS & ENERGY
ONE N CENTRAL AVE
PHOENIX, AZ 85004 -4427
Phone: 602-417-9200

Receipt

No: 3610238

Transaction #: 3713750	
Date of Transaction: 07/20/2016	
CUSTOMER:	
DESERT FOX SOMBRERO BUTTE CO 11280 N SHADOW VISTA PL ORO VALLEY, AZ 85742-9678 US	

LINE #	QTY	DESCRIPTION	REMARKS	UNIT PRICE	TOTAL
1	1.00	LOCATABLE MINERALS / MINING CLAIMS- NOT NEW-UNADJUD, ONE AUTH NO. ONLY / MINING CLAIM MONEY RECEIVED CASES: AMC371533/\$11935.00	MAINT 2017/77	- n/a -	11935.00
TOTAL:					\$11,935.00

PAYMENT INFORMATION			
1	AMOUNT:	11935.00	POSTMARKED: N/A
	TYPE:	CHECK	RECEIVED: 07/20/2016
	CHECK NO:	3176	
	NAME:	DESERT FOX VAN DYKE CO STE 650-340 12 AVE SW CALGARY AB CANADA NS T2R 1L5	

REMARKS

This receipt was generated by the automated BLM Collections and Billing System and is a paper representation of a portion of the official electronic record contained therein.

7-16, 2016

United States Department of Interior
Bureau of Land Management
Records Section
One North Central Avenue
Suite 800
Phoenix, Arizona 85011

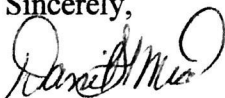
Notice of Intent
ANNUAL CLAIM MAINTENANCE FEES for 2016/2017,
By DESERT FOX SOMBRERO BUTTE CO

To Whom It May Concern:

The Final Rule as published in the Federal Register implements provisions of the Interior Department and related agencies, *that a Statutorily Authorized Adjustment effective June 30, 2014 that requires an annual rental fee of \$155.00* for each unpatented mining claim and site located and held under the General Mining Law of 1872.

This will serve as notice that **DESERT FOX SOMBRERO BUTTE CO**, whose address for purposes of this filing is 11280 North Shadow Vista Place Tucson, Arizona 85742 intends to hold the mining claims and /or mill sites described in **Exhibit "A"** attached hereto for the assessment years **2016/2017**, by payment of the annual claim maintenance fee of **\$155.00** per claim or site. Payment of **\$11,935.00** is made herewith for such assessment years for each of the unpatented lode claims and sites. The name, BLM serial number, book and page or index number of recording of the location notice is official records of Pinal County, Arizona, of which are set forth in **Exhibit "A"** attached hereto and by this reference incorporated herein.

Sincerely,



Daniel L Mead
Cornerstone Lands LLC
Agent for: DESERT FOX SOMBRERO BUTTE CO

Telephone 520-419-2622

Cc: file

RECEIVED
BLM AZ STATE OFFICE
2016 JUL 20 A 9:45
TUCSON, ARIZONA

3610238

ENTERED
JUL 21 2016
BY: *RAM*

DESERT FOX SOMBRERO BUTTE CO

Notice of Intent to hold the foregoing unpatented Mining Claims for 2016/2017:

NO.	AMC	Claim Name	County	Book	Fee Number
1	371533	MAX F1	Pinal	2006	27209
2	371534	MAX F2	Pinal	2006	27210
3	371535	MAX F3	Pinal	2006	27211
4	371536	MAX F4	Pinal	2006	27212
5	371537	MAX F5	Pinal	2006	27213
6	371538	MAX 5	Pinal	2006	31771
7	371539	MAX 6	Pinal	2006	31772
8	371540	MAX 7	Pinal	2006	31773
9	371541	MAX 8	Pinal	2006	31774
10	371542	MAX 9	Pinal	2006	31775
11	371543	MAX 10	Pinal	2006	31776
12	371544	MAX 11	Pinal	2006	31777
13	371545	MAX 12	Pinal	2006	31778
14	371546	MAX 13	Pinal	2006	31779
15	371547	MAX 14	Pinal	2006	31780
16	371548	MAX 15	Pinal	2006	31781
17	371549	MAX 16	Pinal	2006	31782
18	371550	MAX 17	Pinal	2006	31783
19	371551	MAX 18	Pinal	2006	31784
20	371552	MAX 19	Pinal	2006	31785
21	371553	MAX 20	Pinal	2006	31786
22	371554	MAX 21	Pinal	2006	31787
23	371555	MAX 22	Pinal	2006	31788
24	371556	MAX 23	Pinal	2006	31789
25	371557	MAX 24	Pinal	2006	31790
26	371558	MAX 25	Pinal	2006	31791
27	371559	MAX 26	Pinal	2006	31792
28	371560	MAX 27	Pinal	2006	31793
29	371561	MAX 28	Pinal	2006	31794
30	371562	MAX 29	Pinal	2006	31795
31	371563	MAX 30	Pinal	2006	31796
32	371564	MAX 31	Pinal	2006	31797
33	396287	AMY 7	Pinal	2008	119817
34	396288	AMY 9	Pinal	2008	119819
35	396289	AMY 11	Pinal	2008	119821
36	396290	AMY 13	Pinal	2008	119823

RECEIVED
 DEPT. OF MINES
 AZ STATE OFFICE
 2016 JUL 20 A 9:45

37	396291	AMY 15	Pinal	2008	119825
38	396292	AMY 17	Pinal	2008	119827
39	357560	Magma Chief Ext.	Pinal	2003	20795
40	357561	Battle Axe	Pinal	2003	20796
41	357562	Kin Sabie	Pinal	2003	20794
42	357853	Sunset	Pinal	2003	26072
43	357854	Jewel	Pinal	2003	26073
44	357871	Hot Foot Johnny	Pinal	2003	27362
45	357873	Bagdad MS3601	Pinal	2003	29683
46	357874	Copper Reef No. 2	Pinal	2003	29682
47	358745	Copper Ridge	Pinal	2003	80487
48	358746	Copper Ridge 1	Pinal	2003	80488
49	358032	Lookout MS3601	Pinal	2003	53907
50	357875	Sunday	Pinal	2003	29684
51	359987	Sunset 1	Pinal	2004	10787
52	359988	Sunset 2	Pinal	2004	10788
53	359989	Sunset 3	Pinal	2004	10789
54	360058	Copper Triangle	Pinal	2004	67577
55	359990	Red Mountain	Pinal	2004	10786
56	420234	AMY 1	Pinal	2012	103555
57	420235	AMY 2	Pinal	2012	103556
58	420236	AMY 3	Pinal	2012	103557
59	420237	AMY 4	Pinal	2012	103558
60	420238	AMY 5	Pinal	2012	103559
61	420239	AMY 6	Pinal	2012	103560
62	420240	AMY 8	Pinal	2012	103561
63	420241	AMY 10	Pinal	2012	103562
64	420242	AMY 12	Pinal	2012	103563
65	420243	AMY 14	Pinal	2012	103564
66	420244	AMY 16	Pinal	2012	103565
67	420245	AMY 18	Pinal	2012	103566
68	420246	AMY 19	Pinal	2012	103567
69	420247	AMY 20	Pinal	2012	103568
70	420248	AMY 21	Pinal	2012	103569
71	420249	AMY 22	Pinal	2012	103570
72	420250	AMY 23	Pinal	2012	103571
73	420251	AMY 24	Pinal	2012	103572
74	420252	AMY 25	Pinal	2012	103573
75	420253	AMY 26	Pinal	2012	103574
76	420254	AMY 27	Pinal	2012	103575
77	420255	AMY 28	Pinal	2012	103576

Total number of unpatented mining claims = 77

2016 JUL 20 9:45 AM
 HAZ STATE OFFICE
 PROPERTY

United States Department of the Interior
Bureau of Land Management
 DIV OF LANDS, MINRLS & ENERGY
 ONE N CENTRAL AVE
 PHOENIX, AZ 85004 -4427
 Phone: 602-417-9200

Receipt

No: 3610238

Transaction #: 3713750	
Date of Transaction: 07/20/2016	
CUSTOMER:	
DESERT FOX SOMBRERO BUTTE CO 11280 N SHADOW VISTA PL ORO VALLEY, AZ 85742-9678 US	

LINE #	QTY	DESCRIPTION	REMARKS	UNIT PRICE	TOTAL
1	1.00	LOCATABLE MINERALS / MINING CLAIMS- NOT NEW-UNADJUD, ONE AUTH NO. ONLY / MINING CLAIM MONEY RECEIVED CASES: AMC371533/\$11935.00	MAINT 2017/77	- n/a -	11935.00
TOTAL:					\$11,935.00

PAYMENT INFORMATION			
1	AMOUNT:	11935.00	POSTMARKED: N/A
	TYPE:	CHECK	RECEIVED: 07/20/2016
	CHECK NO:	3176	
	NAME:	DESERT FOX VAN DYKE CO STE 650-340 12 AVE SW CALGARY AB CANADA NS T2R 1L5	

REMARKS

This receipt was generated by the automated BLM Collections and Billing System and is a paper representation of a portion of the official electronic record contained therein.

July 15, 2015

United States Department of Interior
Bureau of Land Management
Records Section
One North Central Avenue
Suite 800
Phoenix, Arizona 85011

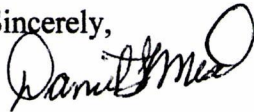
Notice of Intent
ANNUAL CLAIM MAINTENANCE FEES for 2015/2016,
By COPPER FOX SOMBRERO BUTTE CO

To Whom It May Concern:

The Final Rule as published in the Federal Register implements provisions of the Interior Department and related agencies, *that a Statutorily Authorized Adjustment effective June 30, 2014 that requires an annual rental fee of \$155.00* for each unpatented mining claim and site located and held under the General Mining Law of 1872.

This will serve as notice that **COPPER FOX SOMBRERO BUTTE CO**, whose address for purposes of this filing is 11280 North Shadow Vista Place Tucson, Arizona 85742 intends to hold the mining claims and /or mill sites described in **Exhibit "A"** attached hereto for the assessment years **2015/2016**, by payment of the annual claim maintenance fee of **\$155.00** per claim or site. Payment of **\$11,935.00** is made herewith for such assessment years for each of the unpatented lode claims and sites. The name, BLM serial number, book and page or index number of recording of the location notice is official records of Pinal County, Arizona, of which are set forth in **Exhibit "A"** attached hereto and by this reference incorporated herein.

Sincerely,



Daniel L Mead
Cornerstone Lands LLC
Agent for: COPPER FOX SOMBRERO BUTTE CO

Telephone 520-419-2622

Cc: file

~~200230~~ 371533
396287
420234 357560
357853
357871
357873
358745
358746
358032
357873
359987
360058

RECEIVED
BLM AZ STATE OFFICE
2015 JUL 24 A 9:01
PHOENIX, ARIZONA

3349696

ENTERED
JUL 27 2015
BY: RAm

COPPER FOX SOMBRERO BUTTE CO

Notice of Intent to hold the foregoing unpatented Mining Claims for 2015/2016:

NO.	AMC	Claim Name	County	Book	Fee Number
1	371533	MAX F1	Pinal	2006	27209
2	371534	MAX F2	Pinal	2006	27210
3	371535	MAX F3	Pinal	2006	27211
4	371536	MAX F4	Pinal	2006	27212
5	371537	MAX F5	Pinal	2006	27213
6	371538	MAX 5	Pinal	2006	31771
7	371539	MAX 6	Pinal	2006	31772
8	371540	MAX 7	Pinal	2006	31773
9	371541	MAX 8	Pinal	2006	31774
10	371542	MAX 9	Pinal	2006	31775
11	371543	MAX 10	Pinal	2006	31776
12	371544	MAX 11	Pinal	2006	31777
13	371545	MAX 12	Pinal	2006	31778
14	371546	MAX 13	Pinal	2006	31779
15	371547	MAX 14	Pinal	2006	31780
16	371548	MAX 15	Pinal	2006	31781
17	371549	MAX 16	Pinal	2006	31782
18	371550	MAX 17	Pinal	2006	31783
19	371551	MAX 18	Pinal	2006	31784
20	371552	MAX 19	Pinal	2006	31785
21	371553	MAX 20	Pinal	2006	31786
22	371554	MAX 21	Pinal	2006	31787
23	371555	MAX 22	Pinal	2006	31788
24	371556	MAX 23	Pinal	2006	31789
25	371557	MAX 24	Pinal	2006	31790
26	371558	MAX 25	Pinal	2006	31791
27	371559	MAX 26	Pinal	2006	31792
28	371560	MAX 27	Pinal	2006	31793
29	371561	MAX 28	Pinal	2006	31794
30	371562	MAX 29	Pinal	2006	31795
31	371563	MAX 30	Pinal	2006	31796
32	371564	MAX 31	Pinal	2006	31797
33	396287	AMY 7	Pinal	2008	119817
34	396288	AMY 9	Pinal	2008	119819
35	396289	AMY 11	Pinal	2008	119821
36	396290	AMY 13	Pinal	2008	119823

RECEIVED
 BLM AZ STATE OFFICE
 2015 JUL 24 A 9:02

United States Department of the Interior
Bureau of Land Management
 LANDS/RECREATION & PLANNING
 ONE N CENTRAL AVE
 PHOENIX, AZ 85004 -2203
 Phone: 602-417-9200

Receipt

No: 3349696

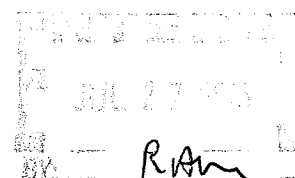
Transaction #: 3447518	
Date of Transaction: 07/24/2015	
CUSTOMER:	
COPPER FOX SOMBRERO CO 11280 N SHADOW VISTA PL ORO VALLEY, AZ 85742-9678 US	

LINE #	QTY	DESCRIPTION	REMARKS	UNIT PRICE	TOTAL
1	1.00	LOCATABLE MINERALS / MINING CLAIMS- NOT NEW-UNADJUD, ONE AUTH NO. ONLY / MINING CLAIM MONEY RECEIVED CASES: AMC371533/\$11935.00	MAINT 2016/77	- n/a -	11935.00
TOTAL:					\$11,935.00

PAYMENT INFORMATION			
1	AMOUNT:	11935.00	POSTMARKED: N/A
	TYPE:	CHECK	RECEIVED: 07/24/2015
	CHECK NO:	2055	
	NAME:	DESERT COPPER FOX SOMBRERO CO STE 650 340 12 AVE SW CALGARY AB CANADA NS T2R 1L5	

REMARKS

This receipt was generated by the automated BLM Collections and Billing System and is a paper representation of a portion of the official electronic record contained therein.



 JUL 27 2015
 BY: RAN

AMC 371533
396287
357560
357853
357871
357873
358745
358746
358032
359987
360058
420234

7-16, 2014

United States Department of Interior
Bureau of Land Management
Records Section
One North Central Avenue
Suite 800
Phoenix, Arizona 85011

NO. OF CLAIMS 77
AMOUNT 11935
RECEIPT NO. 3078185
INIT: JC
BLM-ASO

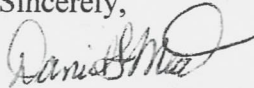
Notice of Intent
ANNUAL CLAIM MAINTENANCE FEES for 2014/2015,
By COPPER FOX SOMBRERO BUTTE CO

To Whom It May Concern:

The Final Rule as published in the Federal Register implements provisions of the Interior Department and related agencies, *that a Statutorily Authorized Adjustment effective June 30, 2014 that requires an annual rental fee of \$155.00* for each unpatented mining claim and site located and held under the General Mining Law of 1872.

This will serve as notice that **COPPER FOX SOMBRERO BUTTE CO**, whose address for purposes of this filing is 11280 North Shadow Vista Place Tucson, Arizona 85742 intends to hold the mining claims and /or mill sites described in **Exhibit "A"** attached hereto for the assessment years **2014/2015**, by payment of the annual claim maintenance fee of **\$155.00** per claim or site. Payment of **\$11,935.00** is made herewith for such assessment years for each of the unpatented lode claims and sites. The name, BLM serial number, book and page or index number of recording of the location notice is official records of Pinal County, Arizona, of which are set forth in **Exhibit "A"** attached hereto and by this reference incorporated herein.

Sincerely,



Daniel L Mead
Cornerstone Lands LLC
Agent for: COPPER FOX SOMBRERO BUTTE CO

Telephone 520-419-2622

Cc: file

ENTERED
JUL 17 2014
BY: RAM

2014 JUL 16 A 10 16

COPPER FOX SOMBRERO BUTTE CO

Notice of Intent to hold the foregoing unpatented Mining Claims for 2014/2015

RECEIVED
 M AZ STATE OFFICE
 2014 JUL 16 AM 10:17
 PHOENIX, ARIZONA

NO.	AMC	Claim Name	County	Book	Fee Number
1	371533	MAX F1	Pinal	2006	27209
2	371534	MAX F2	Pinal	2006	27210
3	371535	MAX F3	Pinal	2006	27211
4	371536	MAX F4	Pinal	2006	27212
5	371537	MAX F5	Pinal	2006	27213
6	371538	MAX 5	Pinal	2006	31771
7	371539	MAX 6	Pinal	2006	31772
8	371540	MAX 7	Pinal	2006	31773
9	371541	MAX 8	Pinal	2006	31774
10	371542	MAX 9	Pinal	2006	31775
11	371543	MAX 10	Pinal	2006	31776
12	371544	MAX 11	Pinal	2006	31777
13	371545	MAX 12	Pinal	2006	31778
14	371546	MAX 13	Pinal	2006	31779
15	371547	MAX 14	Pinal	2006	31780
16	371548	MAX 15	Pinal	2006	31781
17	371549	MAX 16	Pinal	2006	31782
18	371550	MAX 17	Pinal	2006	31783
19	371551	MAX 18	Pinal	2006	31784
20	371552	MAX 19	Pinal	2006	31785
21	371553	MAX 20	Pinal	2006	31786
22	371554	MAX 21	Pinal	2006	31787
23	371555	MAX 22	Pinal	2006	31788
24	371556	MAX 23	Pinal	2006	31789
25	371557	MAX 24	Pinal	2006	31790
26	371558	MAX 25	Pinal	2006	31791
27	371559	MAX 26	Pinal	2006	31792
28	371560	MAX 27	Pinal	2006	31793
29	371561	MAX 28	Pinal	2006	31794
30	371562	MAX 29	Pinal	2006	31795
31	371563	MAX 30	Pinal	2006	31796
32	371564	MAX 31	Pinal	2006	31797
33	396287	AMY 7	Pinal	2008	119817
34	396288	AMY 9	Pinal	2008	119819
35	396289	AMY 11	Pinal	2008	119821
36	396290	AMY 13	Pinal	2008	119823

M/SC

37	396291	AMY 15	Pinal	2008	119825
38	396292	AMY 17	Pinal	2008	119827
39	357560	Magma Chief Ext.	Pinal	2003	20795
40	357561	Battle Axe	Pinal	2003	20796
41	357562	Kin Sabie	Pinal	2003	20794
42	357853	Sunset	Pinal	2003	26072
43	357854	Jewel	Pinal	2003	26073
44	357871	Hot Foot Johnny	Pinal	2003	27362
45	357873	Bagdad MS3601	Pinal	2003	29683
46	357874	Copper Reef No. 2	Pinal	2003	29682
47	358745	Copper Ridge	Pinal	2003	80487
48	358746	Copper Ridge 1	Pinal	2003	80488
49	358032	Lookout MS3601	Pinal	2003	53907
50	357875	Sunday	Pinal	2003	29684
51	359987	Sunset 1	Pinal	2004	10787
52	359988	Sunset 2	Pinal	2004	10788
53	359989	Sunset 3	Pinal	2004	10789
54	360058	Copper Triangle	Pinal	2004	67577
55	359990	Red Mountain	Pinal	2004	10786
56	420234	AMY 1	Pinal	2012	103555
57	420235	AMY 2	Pinal	2012	103556
58	420236	AMY 3	Pinal	2012	103557
59	420237	AMY 4	Pinal	2012	103558
60	420238	AMY 5	Pinal	2012	103559
61	420239	AMY 6	Pinal	2012	103560
62	420240	AMY 8	Pinal	2012	103561
63	420241	AMY 10	Pinal	2012	103562
64	420242	AMY 12	Pinal	2012	103563
65	420243	AMY 14	Pinal	2012	103564
66	420244	AMY 16	Pinal	2012	103565
67	420245	AMY 18	Pinal	2012	103566
68	420246	AMY 19	Pinal	2012	103567
69	420247	AMY 20	Pinal	2012	103568
70	420248	AMY 21	Pinal	2012	103569
71	420249	AMY 22	Pinal	2012	103570
72	420250	AMY 23	Pinal	2012	103571
73	420251	AMY 24	Pinal	2012	103572
74	420252	AMY 25	Pinal	2012	103573
75	420253	AMY 26	Pinal	2012	103574
76	420254	AMY 27	Pinal	2012	103575
77	420255	AMY 28	Pinal	2012	103576

Total number of unpatented mining claims = 77

RECEIVED
AZ STATE OFFICE

United States Department of the Interior
Bureau of Land Management
 LANDS/RECREATION & PLANNING
 ONE N CENTRAL AVE
 PHOENIX, AZ 85004 -2203
 Phone: 602-417-9200

Receipt

No: 3078185

Transaction #: 3169415	
Date of Transaction: 07/16/2014	
CUSTOMER:	
COPPER FOX SOMBRERO BUTTE CO 11280 N SHADOW VISTA PL ORO VALLEY, AZ 85742-9678 US	

LINE #	QTY	DESCRIPTION	REMARKS	UNIT PRICE	TOTAL
1	1.00	LOCATABLE MINERALS / MINING CLAIMS- NOT NEW-UNADJUD, ONE AUTH NO. ONLY / MINING CLAIM MONEY RECEIVED CASES: AMC371533/\$11935.00	NOI (77) 2015	- n/a -	11935.00
TOTAL:					\$11,935.00

PAYMENT INFORMATION			
1	AMOUNT:	11935.00	POSTMARKED: N/A
	TYPE:	CHECK	RECEIVED: 07/16/2014
	CHECK NO:	4242	
	NAME:	CORNERSTONE LANDS DLM LLC 11280 N SHADOW VISTA PL ORO VALLEY AZ 85742-9678 US	

REMARKS

This receipt was generated by the automated BLM Collections and Billing System and is a paper representation of a portion of the official electronic record contained therein.

7-23, 2013

United States Department of Interior
Bureau of Land Management
Records Section
One North Central Avenue
Suite 800
Phoenix, Arizona 85011

NO. OF CLAIMS	<u>77</u>	358746
AMOUNT	<u>10,780</u>	358032
RECEIPT NO.	<u>2838172</u>	357873
INIT.	<u>JC</u>	359987
	** BLM-ASO**	360058

371533
396287
357560
357853
357871
357873
358745
358746

420234

Notice of Intent
ANNUAL CLAIM MAINTENANCE FEES for 2013/2014,
By COPPER FOX SOMBRERO BUTTE CO

To Whom It May Concern:

The Final Rule as published in the Federal Register implements provisions of the Interior Department and related agencies, Appropriations Act of 2003 (the "Act") that requires an annual rental fee of \$140.00 for each unpatented mining claim and site located and held under the General Mining Law of 1872.

This will serve as notice that **COPPER FOX SOMBRERO BUTTE CO**, whose address for purposes of this filing is 11280 North Shadow Vista Place Tucson, Arizona 85742 intends to hold the mining claims and /or mill sites described in **Exhibit "A"** attached hereto for the assessment years **2013/2014**, by payment of the annual claim maintenance fee of \$140.00 per claim or site. Payment of **\$10,780.00** is made herewith for such assessment years for each of the unpatented lode claims and sites. The name, BLM serial number, book and page or index number of recording of the location notice is official records of Pinal County, Arizona, of which are set forth in **Exhibit "A"** attached hereto and by this reference incorporated herein.

Sincerely,



Daniel L Mead
Cornerstone Lands LLC
Agent for: COPPER FOX SOMBRERO BUTTE CO

Telephone 520-419-2622

Cc: file

ENTERED IN COMPUTER
RE 8-19-13

FILED
2013 JUL 23 P 2:12
BLM

COPPER FOX SOMBRERO BUTTE CO

Notice of Intent to hold the foregoing unpatented Mining Claims for 2013/2014:

NO.	AMC	Claim Name	County	Book	Fee Number
1	371533	MAX F1	Pinal	2006	27209
2	371534	MAX F2	Pinal	2006	27210
3	371535	MAX F3	Pinal	2006	27211
4	371536	MAX F4	Pinal	2006	27212
5	371537	MAX F5	Pinal	2006	27213
6	371538	MAX 5	Pinal	2006	31771
7	371539	MAX 6	Pinal	2006	31772
8	371540	MAX 7	Pinal	2006	31773
9	371541	MAX 8	Pinal	2006	31774
10	371542	MAX 9	Pinal	2006	31775
11	371543	MAX 10	Pinal	2006	31776
12	371544	MAX 11	Pinal	2006	31777
13	371545	MAX 12	Pinal	2006	31778
14	371546	MAX 13	Pinal	2006	31779
15	371547	MAX 14	Pinal	2006	31780
16	371548	MAX 15	Pinal	2006	31781
17	371549	MAX 16	Pinal	2006	31782
18	371550	MAX 17	Pinal	2006	31783
19	371551	MAX 18	Pinal	2006	31784
20	371552	MAX 19	Pinal	2006	31785
21	371553	MAX 20	Pinal	2006	31786
22	371554	MAX 21	Pinal	2006	31787
23	371555	MAX 22	Pinal	2006	31788
24	371556	MAX 23	Pinal	2006	31789
25	371557	MAX 24	Pinal	2006	31790
26	371558	MAX 25	Pinal	2006	31791
27	371559	MAX 26	Pinal	2006	31792
28	371560	MAX 27	Pinal	2006	31793
29	371561	MAX 28	Pinal	2006	31794
30	371562	MAX 29	Pinal	2006	31795
31	371563	MAX 30	Pinal	2006	31796
32	371564	MAX 31	Pinal	2006	31797
33	396287	AMY 7	Pinal	2008	119817
34	396288	AMY 9	Pinal	2008	119819
35	396289	AMY 11	Pinal	2008	119821
36	396290	AMY 13	Pinal	2008	119823

2013 JUL 23 P. 2

37	396291	AMY 15	Pinal	2008	119825
38	396292	AMY 17	Pinal	2008	119827
39	357560	Magma Chief Ext.	Pinal	2003	20795
40	357561	Battle Axe	Pinal	2003	20796
41	357562	Kin Sabie	Pinal	2003	20794
42	357853	Sunset	Pinal	2003	26072
43	357854	Jewel	Pinal	2003	26073
44	357871	Hot Foot Johny	Pinal	2003	27362
45	357873	Bagdad MS3601	Pinal	2003	29683
46	357874	Copper Reef No. 2	Pinal	2003	29682
47	357875	Copper Ridge	Pinal	2003	80487 80487 358745
48	358746	Copper Ridge 1	Pinal	2003	80488
49	358032	Lookout MS3601	Pinal	2003	53907
50	357875	Sunday	Pinal	2003	29684
51	359987	Sunset 1	Pinal	2004	10787
52	359988	Sunset 2	Pinal	2004	10788
53	359989	Sunset 3	Pinal	2004	10789
54	360058	Copper Triangle	Pinal	2004	67577
55	359990	Red Mountain	Pinal	2004	10786
56	420234	AMY 1	Pinal	2012	103555
57	420235	AMY 2	Pinal	2012	103556
58	420236	AMY 3	Pinal	2012	103557
59	420237	AMY 4	Pinal	2012	103558
60	420238	AMY 5	Pinal	2012	103559
61	420239	AMY 6	Pinal	2012	103560
62	420240	AMY 8	Pinal	2012	103561
63	420241	AMY 10	Pinal	2012	103562
64	420242	AMY 12	Pinal	2012	103563
65	420243	AMY 14	Pinal	2012	103564
66	420244	AMY 16	Pinal	2012	103565
67	420245	AMY 18	Pinal	2012	103566
68	420246	AMY 19	Pinal	2012	103567
69	420247	AMY 20	Pinal	2012	103568
70	420248	AMY 21	Pinal	2012	103569
71	420249	AMY 22	Pinal	2012	103570
72	420250	AMY 23	Pinal	2012	103571
73	420251	AMY 24	Pinal	2012	103572
74	420252	AMY 25	Pinal	2012	103573
75	420253	AMY 26	Pinal	2012	103574
76	420254	AMY 27	Pinal	2012	103575
77	420255	AMY 28	Pinal	2012	103576

Total number of unpatented mining claims = 77

212

**United States Department of the Interior
Bureau of Land Management**

LANDS/RECREATION & PLANNING

ONE N CENTRAL AVE

PHOENIX, AZ 85004 -2203

Phone: 602-417-9200

Receipt

No:

2838172

Transaction #: 2923728	
Date of Transaction: 07/23/2013	
CUSTOMER:	
COPPER FOX SOMBRERO BUTTE CO 650 340 12 AVE SW CALGARY AB,NS T2R 1L5 CA	

LINE #	QTY	DESCRIPTION	REMARKS	UNIT PRICE	TOTAL
1	1.00	LOCATABLE MINERALS / MINING CLAIMS- NOT NEW-UNADJUD,ONE AUTH NO. ONLY / MINING CLAIM MONEY RECEIVED CASES: AMC371533/\$10780.00	NOI (77) 2014	- n/a -	10780.00
TOTAL:					\$10,780.00

PAYMENT INFORMATION			
1	AMOUNT:	10780.00	POSTMARKED: N/A
	TYPE:	CHECK	RECEIVED: 07/23/2013
	CHECK NO:	1004	
	NAME:	COPPER FOX SOMBRERO BUTTE CO 650 340 12 AVE SW CALGARY AB NS T2R 1L5 CA	

REMARKS

This receipt was generated by the automated BLM Collections and Billing System and is a paper representation of a portion of the official electronic record contained therein.

NOTICE!!

These documents have been scanned!

Do not place un-scanned documents beneath this notice!

Do not remove this notice from this file!

GPO Jacket No. 560-102
Print Order 61540
Rise Business Services, LLC
Job=AZ15 5/13/2019



Box Number= AZ15042



Claim Begin-End: AMC420234-AMC420255

6 Location Notices-Amendments and Supporting Documents



AZ15042-2

AMC420196-AMC421069

MINING CLAIM STATUS REPORT

DATA ENTERED JAN 31 2013 ^{pb}

MTP Checked by AC
GEO Checked by AC

LEAD SERIAL NUMBER AMC 420234 thru AMC 420255

OF CLAIMS & TYPE

22 LODE
_____ PLACER
_____ ASSOCIATION PLACER
_____ MILL SITE
_____ TUNNEL SITE

CHARGES

Location Fee @ \$34 = \$ 748
Processing Fee @ \$15 = \$ 330
Maintenance Fee @ \$140 = \$ 3080
Overage (+) \$ _____
Shortage (-) \$ _____
Other Fees \$ _____
TOTAL \$ 4158

TOTAL CLAIM ACREAGE? 440

OF LOCATORS? 1

DOCUMENTS RECEIVED VIA -

Over-the-Counter () Mail ()

TIMELY FILED?

Yes () No ()

LEGAL DESCRIPTION - T 8S R 18E SEC 26, 25, 24, 23, 35, 27, 22
T _____ R _____ SEC _____
T _____ R _____ SEC _____
T _____ R _____ SEC _____

BLM () FOREST SERVICE () SUBJ TO PL 359: Yes () No ()

WILDERNESS AREA: No () Yes ()

SPLIT ESTATE - N/A () SX () PX () SRHA () OTHER ()

Proper Notice Filed if Located on SHRA Lands? N/A () Yes () No ()

RECONVEYED MINERALS ON BLM LANDS REQUIRE OPENING ORDERS FROM 1944 TO 1993 -

Open to Entry on: _____ N/A ()

COMMENTS/STATUS - VOID () PARTIALLY VOID () PVT MINERALS () WITHDRAWN LANDS ()

OTHER () Part on land with no Federal minerals AM 10, 12, 14, 16, 18, 17

Claimant acknowledges that portions of the following claims(s) site(s) may be void or voidable.

Patented land claimant is aware of area
Sec's 22, thru 35.

Printed Name of Claimant Timothy M. Marsh Signature of Claimant [Signature]

***** FINAL ADJUDICATION *****

DATE 7/23/2013 INITIALS [Signature]

OK

When recorded return to:
Timothy Marsh
4750 North Bonanza Avenue
Tucson, AZ 85749



OFFICIAL RECORDS OF
PINAL COUNTY RECORDER

DATE/TIME: 12/03/2012 1230
FEE: \$10.00
PAGES: 1
FEE NUMBER: 2012-103555



LOCATION NOTICE FOR LODE MINING CLAIM

NOTICE IS HEREBY GIVEN that the AMY-1 lode mining claim has been located by Timothy Marsh, Copper Fox Sombrero Butte Co., whose current mailing address is 4750 North Bonanza Avenue, Tucson, Arizona, 85749. The general course of this claim is East - West, and it is situated in Pinal County, Arizona. This claim is 1500 feet in length and 600 feet in width. This claim runs from the location monument on which this location notice is posted approximately 1470 feet in an easterly direction to the East end line and 30 feet in a westerly direction to the West end line. This claim is marked by six additional monuments, one at each corner and one at the center of each end line.

The location monument on which this notice is posted is situated within Section 26, Township 8 South, Range 18 East, Gila and Salt River Baseline and Meridian, Arizona, and this claim occupies the following quarter section(s), section(s), Township, and Range:

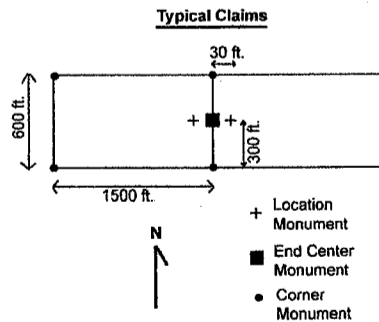
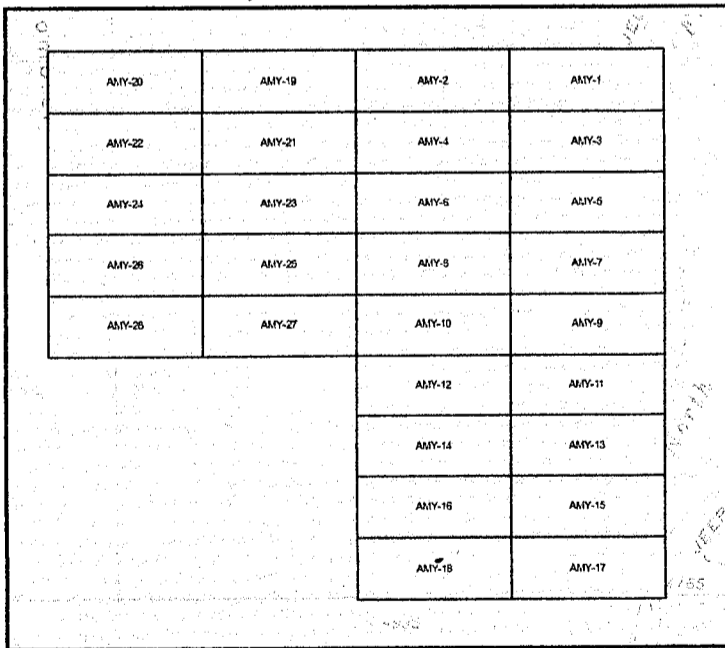
Quarter Section	Section	Township	Range
<u>NE</u> ¼	<u>26</u> Section	8 South	18 East
<u>NW</u> ¼	<u>25</u> Section	8 South	18 East
<u>SE</u> ¼	<u>23</u> Section	8 South	18 East
<u>SW</u> ¼	<u>24</u> Section	8 South	18 East

The northeast corner of this claim is 100 feet east and 100 feet north of the northeast corner of Section 26, Township 8 South, Range 18 East, Gila and Salt River Baseline and Meridian.

DATED AND POSTED on the ground this 24th day of November, 2012, at 12:32 p.m.

Timothy Marsh

T. 8 S., R. 18 E. G&SRBM



RECEIVED
B.L.M. AZ STATE OFFICE
2012 DEC - 7 P 1:26
PHOENIX, AZ

AM04202231

Scale: 1 inch = 2,000 feet

The above map depicts the AMY-1 lode mining claim, which is located in Section 26, Township 8 South, Range 18 East, Gila and Salt River Baseline and Meridian, Pinal County, Arizona. The claim corners, end centers, and location monuments are marked by 2 inch by 2 inch by 5-foot wooden posts with aluminum tags. The bearings and distances between claim corners are as depicted on the map.

OK

When recorded return to
Timothy Marsh
4750 North Bonanza Avenue
Tucson, AZ 85749



OFFICIAL RECORDS OF
PINAL COUNTY RECORDER

DATE/TIME: 12/03/2012 1230
FEE: \$10.00
PAGES: 1
FEE NUMBER: 2012-103556



LOCATION NOTICE FOR LODE MINING CLAIM

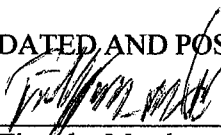
NOTICE IS HEREBY GIVEN that the AMY-2 lode mining claim has been located by Timothy Marsh, Copper Fox Sombrero Butte Co., whose current mailing address is 4750 North Bonanza Avenue, Tucson, Arizona, 85749. The general course of this claim is East - West, and it is situated in Pinal County, Arizona. This claim is 1500 feet in length and 600 feet in width. This claim runs from the location monument on which this location notice is posted approximately 30 feet in an easterly direction to the East end line and 1470 feet in a westerly direction to the West end line. This claim is marked by six additional monuments, one at each corner and one at the center of each end line.

The location monument on which this notice is posted is situated within Section 26, Township 8 South, Range 18 East, Gila and Salt River Baseline and Meridian, Arizona, and this claim occupies the following quarter section(s), section(s), Township, and Range:

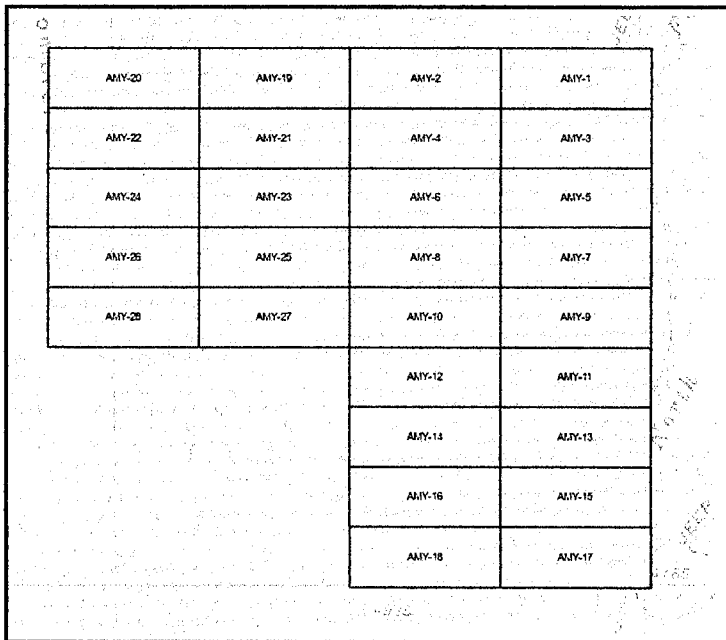
Quarter Section	Section	Township	Range
<u>NE</u> 1/4	<u>26</u> Section	8 South	18 East
<u>NW</u> 1/4	<u>26</u> Section	8 South	18 East
<u>SE</u> 1/4	<u>23</u> Section	8 South	18 East
<u>SW</u> 1/4	<u>23</u> Section	8 South	18 East

The northeast corner of this claim is 100 feet North and 1400 feet West of the northeast corner of Section 26, Township 8 South, Range 18 East, Gila and Salt River Baseline and Meridian.

DATED AND POSTED on the ground this 24th day of November, 2012, at 12:33 p.m.

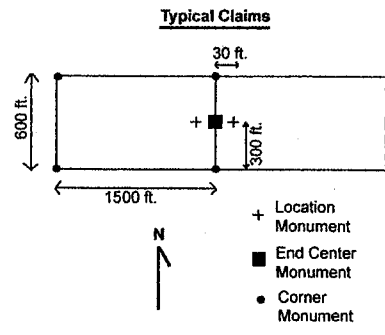

Timothy Marsh

T. 8 S., R. 18 E. G&SRBM



RECEIVED
B.L.M. AZ STATE OFFICE
2012 DEC -7 P 1:26
PHOENIX, AZ

AMC0120235



Scale: 1 inch = 2,000 feet

The above map depicts the AMY-2 lode mining claim, which is located in Section 26, Township 8 South, Range 18 East, Gila and Salt River Baseline and Meridian, Pinal County, Arizona. The claim corners, end centers, and location monuments are marked by 2 inch by 2 inch by 5-foot wooden posts with aluminum tags. The bearings and distances between claim corners are as depicted on the map.

OK

When recorded return to:
Timothy Marsh
4750 North Bonanza Avenue
Tucson, AZ 85749



OFFICIAL RECORDS OF
PINAL COUNTY RECORDER

DATE/TIME: 12/03/2012 1230
FEE: \$10.00
PAGES: 1
FEE NUMBER: 2012-103557



LOCATION NOTICE FOR LODE MINING CLAIM

NOTICE IS HEREBY GIVEN that the AMY-3 lode mining claim has been located by Timothy Marsh, Copper Fox Sombrero Butte Co., whose current mailing address is 4750 North Bonanza Avenue, Tucson, Arizona, 85749. The general course of this claim is East - West, and it is situated in Pinal County, Arizona. This claim is 1500 feet in length and 600 feet in width. This claim runs from the location monument on which this location notice is posted approximately 1470 feet in an easterly direction to the East end line and 30 feet in a westerly direction to the West end line. This claim is marked by six additional monuments, one at each corner and one at the center of each end line.

The location monument on which this notice is posted is situated within Section 26, Township 8 South, Range 18 East, Gila and Salt River Baseline and Meridian, Arizona, and this claim occupies the following quarter section(s), section(s), Township, and Range:

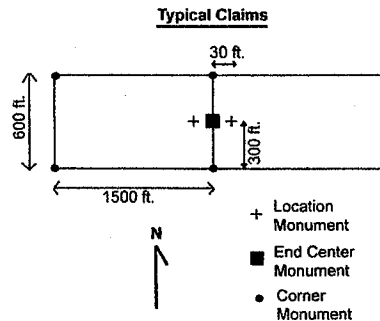
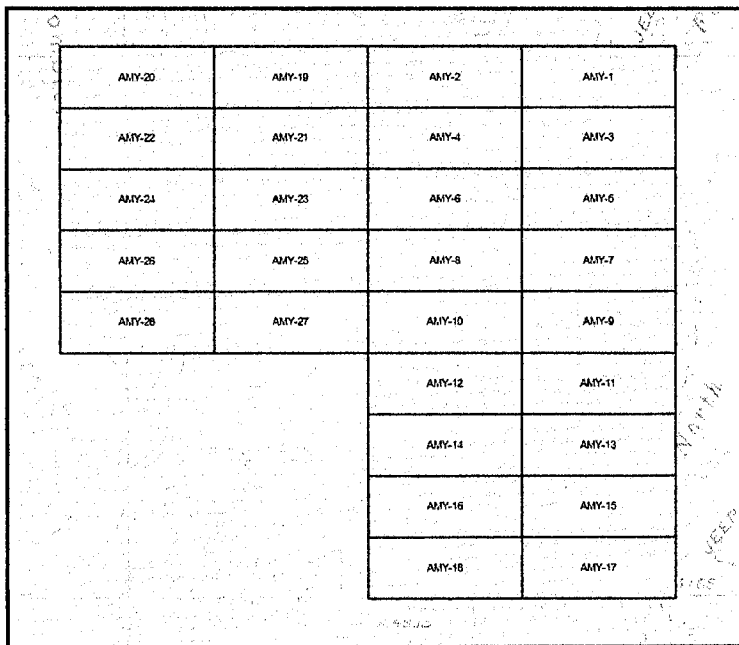
Quarter Section	Section	Township	Range
<u>NE 1/4</u>	<u>26</u> Section	8 South	18 East
<u>NW 1/4</u>	<u>25</u> Section	8 South	18 East
<u>1/4</u>	<u>Section</u>	8 South	18 East
<u>1/4</u>	<u>Section</u>	8 South	18 East

The northeast corner of this claim is 100 feet east and 500 feet south of the northeast corner of Section 26, Township 8 South, Range 18 East, Gila and Salt River Baseline and Meridian.

DATED AND POSTED on the ground this 24th day of November, 2012, at 12:59 p.m.

Timothy Marsh

T. 8 S., R. 18 E. G&SRBM



RECEIVED
B.L.M. AZ STATE OFFICE
2012 DEC - 7 P 1:26
PHOENIX, AZ

AMC1120236

Scale: 1 inch = 2,000 feet

The above map depicts the AMY-3 lode mining claim, which is located in Section 26, Township 8 South, Range 18 East, Gila and Salt River Baseline and Meridian, Pinal County, Arizona. The claim corners, end centers, and location monuments are marked by 2 inch by 2 inch by 5-foot wooden posts with aluminum tags. The bearings and distances between claim corners are as depicted on the map.

OK

When recorded return to:
Timothy Marsh
4750 North Bonanza Avenue
Tucson, AZ 85749



OFFICIAL RECORDS OF
PINAL COUNTY RECORDER

DATE/TIME: 12/03/2012 1230
FEE: \$10.00
PAGES: 1
FEE NUMBER: 2012-103558



LOCATION NOTICE FOR LODE MINING CLAIM

NOTICE IS HEREBY GIVEN that the AMY-4 lode mining claim has been located by Timothy Marsh, Copper Fox Sombrero Butte Co., whose current mailing address is 4750 North Bonanza Avenue, Tucson, Arizona, 85749. The general course of this claim is East - West, and it is situated in Pinal County, Arizona. This claim is 1500 feet in length and 600 feet in width. This claim runs from the location monument on which this location notice is posted approximately 30 feet in an easterly direction to the East end line and 1470 feet in a westerly direction to the West end line. This claim is marked by six additional monuments, one at each corner and one at the center of each end line.

The location monument on which this notice is posted is situated within Section 26, Township 8 South, Range 18 East, Gila and Salt River Baseline and Meridian, Arizona, and this claim occupies the following quarter section(s), section(s), Township, and Range:

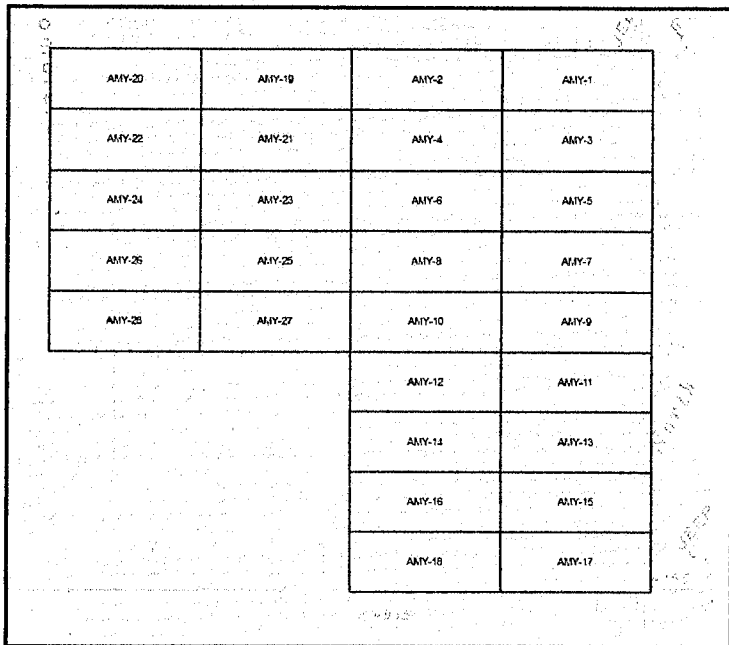
Quarter Section	Section	Township	Range
<u>NE</u> 1/4	<u>26</u> Section	<u>8 South</u>	<u>18 East</u>
<u>NW</u> 1/4	<u>26</u> Section	<u>8 South</u>	<u>18 East</u>
1/4	Section	8 South	18 East
1/4	Section	8 South	18 East

The northeast corner of this claim is 500 feet South and 1400 feet West of the northeast corner of Section 26, Township 8 South, Range 18 East, Gila and Salt River Baseline and Meridian.

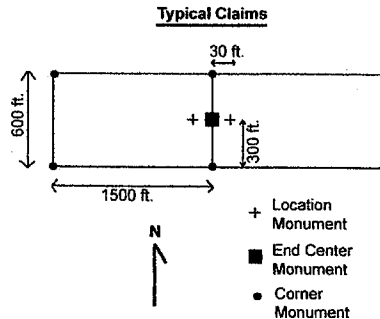
DATED AND POSTED on the ground this 2nd day of November, 2012, at 1:00 p.m.

Timothy Marsh
Timothy Marsh

T. 8 S., R. 18 E. G&SRBM



RECEIVED
B.L.M. AZ STATE OFFICE
2012 DEC -7 P 1:26
PHOENIX, AZ



Scale: 1 inch = 2,000 feet

The above map depicts the AMY-4 lode mining claim, which is located in Section 26, Township 8 South, Range 18 East, Gila and Salt River Baseline and Meridian, Pinal County, Arizona. The claim corners, end centers, and location monuments are marked by 2 inch by 2 inch by 5-foot wooden posts with aluminum tags. The bearings and distances between claim corners are as depicted on the map.

AMCH20237

OK

When recorded return to:
Timothy Marsh
4750 North Bonanza Avenue
Tucson, AZ 85749



OFFICIAL RECORDS OF
PINAL COUNTY RECORDER

DATE/TIME: 12/03/2012 1230
FEE: \$10.00
PAGES: 1
FEE NUMBER: 2012-103559



LOCATION NOTICE FOR LODE MINING CLAIM

NOTICE IS HEREBY GIVEN that the AMY-5 lode mining claim has been located by Timothy Marsh, Copper Fox Sombrero Butte Co., whose current mailing address is 4750 North Bonanza Avenue, Tucson, Arizona, 85749. The general course of this claim is East - West, and it is situated in Pinal County, Arizona. This claim is 1500 feet in length and 600 feet in width. This claim runs from the location monument on which this location notice is posted approximately 1470 feet in an easterly direction to the East end line and 30 feet in a westerly direction to the West end line. This claim is marked by six additional monuments, one at each corner and one at the center of each end line.

The location monument on which this notice is posted is situated within Section 26, Township 8 South, Range 18 East, Gila and Salt River Baseline and Meridian, Arizona, and this claim occupies the following quarter section(s), section(s), Township, and Range:

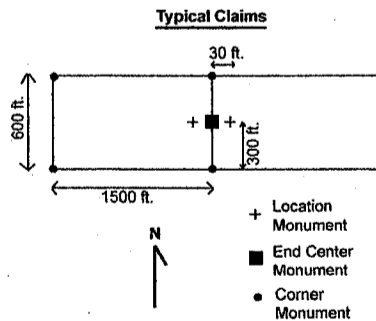
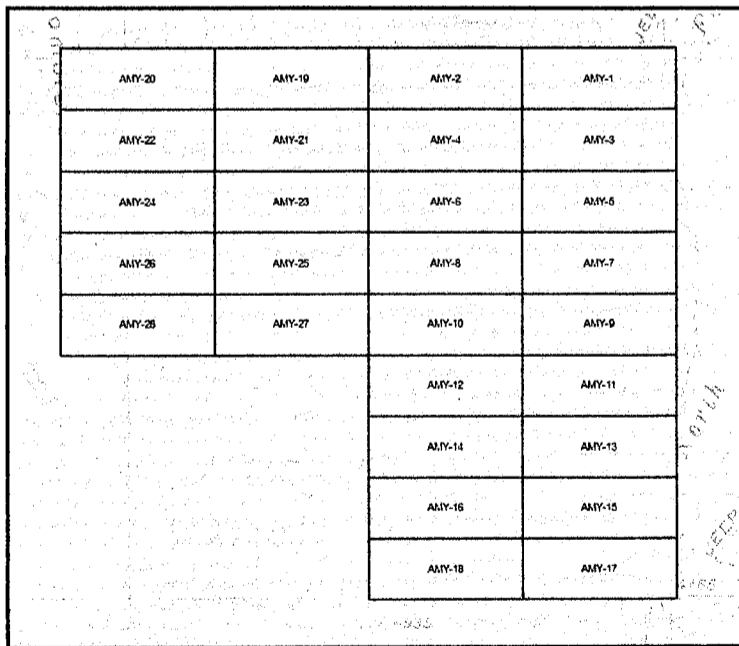
Quarter Section	Section	Township	Range
<u>NE</u> 1/4	<u>26</u> Section	8 South	18 East
<u>NW</u> 1/4	<u>25</u> Section	8 South	18 East
1/4	Section	8 South	18 East
1/4	Section	8 South	18 East

The northeast corner of this claim is 100 feet east and 1100 feet south of the northeast corner of Section 26, Township 8 South, Range 18 East, Gila and Salt River Baseline and Meridian.

DATED AND POSTED on the ground this 24th day of November, 2012, at 1:39 ~~AM~~ p.m.

Timothy Marsh

T. 8 S., R. 18 E. G&SRBM



RECEIVED
BLM, AZ STATE OFFICE
2012 DEC -7 P 1:26
PHOENIX, AZ

AM0420230

Scale: 1 inch = 2,000 feet

The above map depicts the AMY-5 lode mining claim, which is located in Section 26, Township 8 South, Range 18 East, Gila and Salt River Baseline and Meridian, Pinal County, Arizona. The claim corners, end centers, and location monuments are marked by 2 inch by 2 inch by 5-foot wooden posts with aluminum tags. The bearings and distances between claim corners are as depicted on the map.

OR

When recorded return to:
Timothy Marsh
4750 North Bonanza Avenue
Tucson, AZ 85749



OFFICIAL RECORDS OF
PINAL COUNTY RECORDER

DATE/TIME: 12/03/2012 1230
FEE: \$10.00
PAGES: 1
FEE NUMBER: 2012-103560



LOCATION NOTICE FOR LODE MINING CLAIM

NOTICE IS HEREBY GIVEN that the AMY-6 lode mining claim has been located by Timothy Marsh, Copper Fox Sombrero Butte Co., whose current mailing address is 4750 North Bonanza Avenue, Tucson, Arizona, 85749. The general course of this claim is East - West, and it is situated in Pinal County, Arizona. This claim is 1500 feet in length and 600 feet in width. This claim runs from the location monument on which this location notice is posted approximately 30 feet in an easterly direction to the East end line and 1470 feet in a westerly direction to the West end line. This claim is marked by six additional monuments, one at each corner and one at the center of each end line.

The location monument on which this notice is posted is situated within Section 26, Township 8 South, Range 18 East, Gila and Salt River Baseline and Meridian, Arizona, and this claim occupies the following quarter section(s), section(s), Township, and Range:

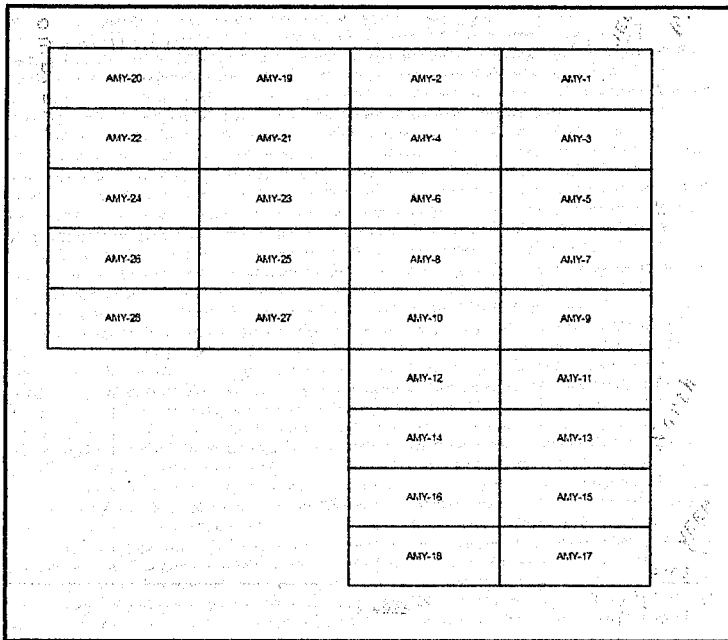
Quarter Section	Section	Township	Range
NE 1/4	26 Section	8 South	18 East
NW 1/4	26 Section	8 South	18 East
1/4	Section	8 South	18 East
1/4	Section	8 South	18 East

The northeast corner of this claim is 1100 feet South and 1400 feet West of the northeast corner of Section 26, Township 8 South, Range 18 East, Gila and Salt River Baseline and Meridian.

DATED AND POSTED on the ground this 24th day of November, 2012, at 1:40 pm p.m.

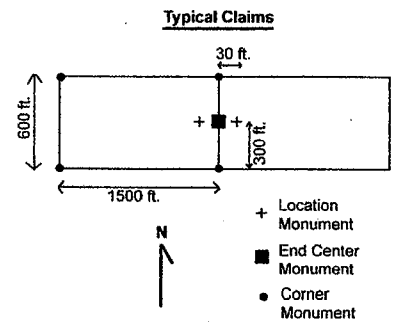
Timothy Marsh

T. 8 S., R. 18 E. G&SRBM



RECEIVED
B.L.M. AZ STATE OFFICE
2012 DEC -7 P 1:26
PHOENIX, AZ

AR101120239



Scale: 1 inch = 2,000 feet

The above map depicts the AMY-6 lode mining claim, which is located in Section 26, Township 8 South, Range 18 East, Gila and Salt River Baseline and Meridian, Pinal County, Arizona. The claim corners, end centers, and location monuments are marked by 2 inch by 2 inch by 5-foot wooden posts with aluminum tags. The bearings and distances between claim corners are as depicted on the map.

OK

When recorded return to:
Timothy Marsh
4750 North Bonanza Avenue
Tucson, AZ 85749



OFFICIAL RECORDS OF
PINAL COUNTY RECORDER

DATE/TIME: 12/03/2012 1230
FEE: \$10.00
PAGES: 1
FEE NUMBER: 2012-103561



LOCATION NOTICE FOR LODE MINING CLAIM

NOTICE IS HEREBY GIVEN that the AMY-8 lode mining claim has been located by Timothy Marsh, Copper Fox Sombrero Butte Co., whose current mailing address is 4750 North Bonanza Avenue, Tucson, Arizona, 85749. The general course of this claim is East - West, and it is situated in Pinal County, Arizona. This claim is 1500 feet in length and 600 feet in width. This claim runs from the location monument on which this location notice is posted approximately 30 feet in an easterly direction to the East end line and 1470 feet in a westerly direction to the West end line. This claim is marked by six additional monuments, one at each corner and one at the center of each end line.

The location monument on which this notice is posted is situated within Section 26, Township 8 South, Range 18 East, Gila and Salt River Baseline and Meridian, Arizona, and this claim occupies the following quarter section(s), section(s), Township, and Range:

Quarter Section	Section	Township	Range
NE 1/4	26 Section	8 South	18 East
NW 1/4	26 Section	8 South	18 East
1/4	Section	8 South	18 East
1/4	Section	8 South	18 East

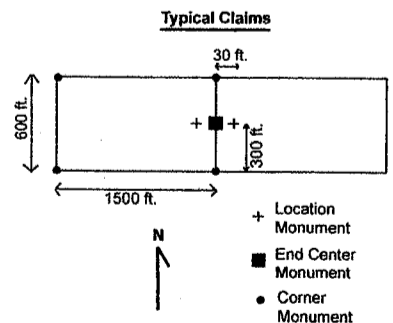
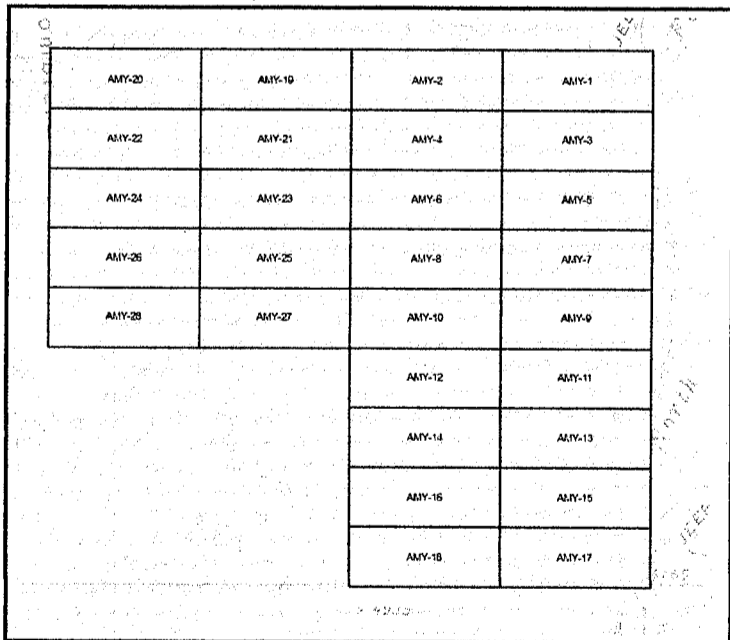
The northeast corner of this claim is 1700 feet South and 1400 feet West of the northeast corner of Section 26, Township 8 South, Range 18 East, Gila and Salt River Baseline and Meridian.

DATED AND POSTED on the ground this 24th day of November, 2012, at 2:00 ~~pm~~ p.m.

Timothy Marsh

RECEIVED
B.L.M. AZ STATE OFFICE
2012 DEC -1 P 1:25
PHOENIX, AZ

T. 8 S., R. 18 E. G&SRBM



Scale: 1 inch = 2,000 feet

The above map depicts the AMY-8 lode mining claim, which is located in Section 26, Township 8 South, Range 18 East, Gila and Salt River Baseline and Meridian, Pinal County, Arizona. The claim corners, end centers, and location monuments are marked by 2 inch by 2 inch by 5-foot wooden posts with aluminum tags. The bearings and distances between claim corners are as depicted on the map.

AR10420210

OK

When recorded return to:
Timothy Marsh
4750 North Bonanza Avenue
Tucson, AZ 85749



OFFICIAL RECORDS OF
PINAL COUNTY RECORDER

DATE/TIME: 12/03/2012 1230
FEE: \$10.00
PAGES: 1
FEE NUMBER: 2012-103562



LOCATION NOTICE FOR LODE MINING CLAIM

NOTICE IS HEREBY GIVEN that the AMY-10 lode mining claim has been located by Timothy Marsh, Copper Fox Sombrero Butte Co., whose current mailing address is 4750 North Bonanza Avenue, Tucson, Arizona, 85749. The general course of this claim is East - West, and it is situated in Pinal County, Arizona. This claim is 1500 feet in length and 600 feet in width. This claim runs from the location monument on which this location notice is posted approximately 30 feet in an easterly direction to the East end line and 1470 feet in a westerly direction to the West end line. This claim is marked by six additional monuments, one at each corner and one at the center of each end line.

The location monument on which this notice is posted is situated within Section 26, Township 8 South, Range 18 East, Gila and Salt River Baseline and Meridian, Arizona, and this claim occupies the following quarter section(s), section(s), Township, and Range:

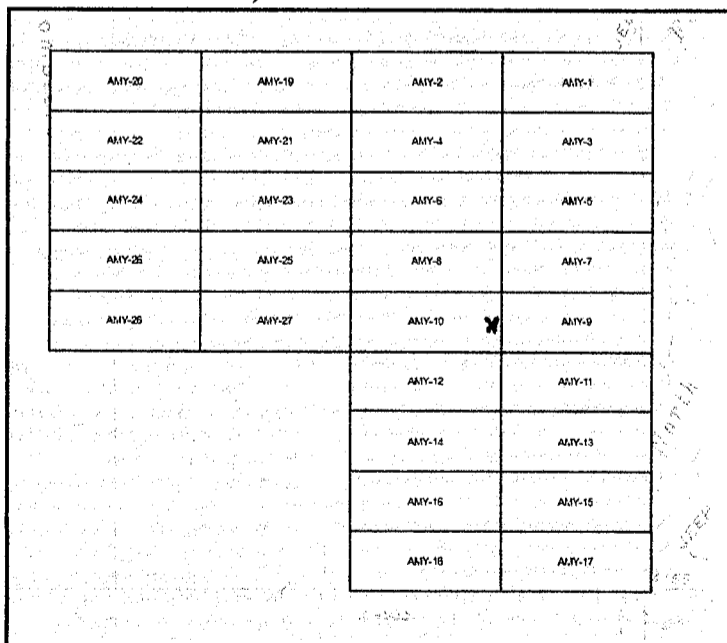
Quarter Section	Section	Township	Range
NE 1/4	26 Section	8 South	18 East
NW 1/4	26 Section	8 South	18 East
SE 1/4	26 Section	8 South	18 East
SW 1/4	26 Section	8 South	18 East

The northeast corner of this claim is 2300 feet South and 1400 feet West of the northeast corner of Section 26, Township 8 South, Range 18 East, Gila and Salt River Baseline and Meridian.

DATED AND POSTED on the ground this 26th day of November, 2012, at 1:02 ~~pm~~/p.m.

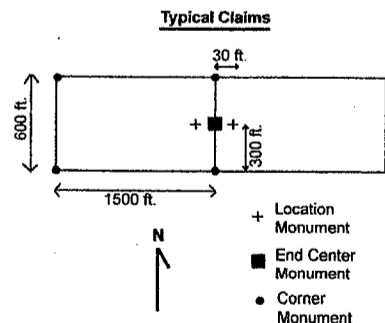
Timothy Marsh

T. 8 S., R. 18 E. G&SRBM



RECEIVED
B.L.M. AZ STATE OFFICE
2012 DEC -7 P 1:25
PHOENIX, AZ

AMON 20241



Scale: 1 inch = 2,000 feet

The above map depicts the AMY-10 lode mining claim, which is located in Section 26, Township 8 South, Range 18 East, Gila and Salt River Baseline and Meridian, Pinal County, Arizona. The claim corners, end centers, and location monuments are marked by 2 inch by 2 inch by 5-foot wooden posts with aluminum tags. The bearings and distances between claim corners are as depicted on the map.

OR

When recorded return to:
Timothy Marsh
4750 North Bonanza Avenue
Tucson, AZ 85749



OFFICIAL RECORDS OF
PINAL COUNTY RECORDER

DATE/TIME: 12/03/2012 1230
FEE: \$10.00
PAGES: 1
FEE NUMBER: 2012-103563



LOCATION NOTICE FOR LODE MINING CLAIM

NOTICE IS HEREBY GIVEN that the AMY-12 lode mining claim has been located by Timothy Marsh, Copper Fox Sombrero Butte Co., whose current mailing address is 4750 North Bonanza Avenue, Tucson, Arizona, 85749. The general course of this claim is East - West, and it is situated in Pinal County, Arizona. This claim is 1500 feet in length and 600 feet in width. This claim runs from the location monument on which this location notice is posted approximately 30 feet in an easterly direction to the East end line and 1470 feet in a westerly direction to the West end line. This claim is marked by six additional monuments, one at each corner and one at the center of each end line.

The location monument on which this notice is posted is situated within Section 26, Township 8 South, Range 18 East, Gila and Salt River Baseline and Meridian, Arizona, and this claim occupies the following quarter section(s), section(s), Township, and Range:

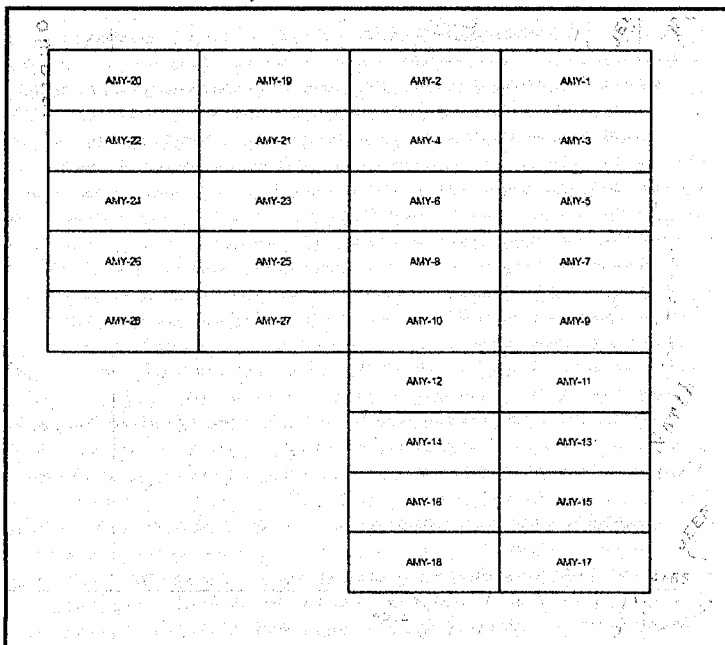
Quarter Section	Section	Township	Range
<u>1/4</u>	<u>26</u> Section	8 South	18 East
<u>1/4</u>	<u>26</u> Section	8 South	18 East
<u>SE 1/4</u>	<u>26</u> Section	8 South	18 East
<u>SW 1/4</u>	<u>26</u> Section	8 South	18 East

The northeast corner of this claim is 2900 feet South and 1400 feet West of the northeast corner of Section 26, Township 8 South, Range 18 East, Gila and Salt River Baseline and Meridian.

DATED AND POSTED on the ground this 26th day of November, 2012, at 1:23 ~~00~~ p.m.

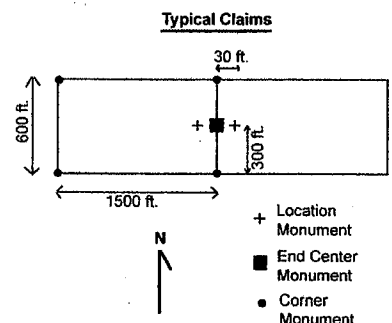
[Signature]
Timothy Marsh

T. 8 S., R. 18 E. G&SRBM



RECEIVED
D.L.M. AZ STATE OFFICE
2012 DEC - 7 P 1:25
PHOENIX, AZ

AMC0120212



Scale: 1 inch = 2,000 feet

The above map depicts the AMY-12 lode mining claim, which is located in Section 26, Township 8 South, Range 18 East, Gila and Salt River Baseline and Meridian, Pinal County, Arizona. The claim corners, end centers, and location monuments are marked by 2 inch by 2 inch by 5-foot wooden posts with aluminum tags. The bearings and distances between claim corners are as depicted on the map.

OK

When recorded return to:
Timothy Marsh
4750 North Bonanza Avenue
Tucson, AZ 85749



OFFICIAL RECORDS OF
PINAL COUNTY RECORDER

DATE/TIME: 12/03/2012 1230
FEE: \$10.00
PAGES: 1
FEE NUMBER: 2012-103564



LOCATION NOTICE FOR LODE MINING CLAIM

NOTICE IS HEREBY GIVEN that the AMY-14 lode mining claim has been located by Timothy Marsh, Copper Fox Sombrero Butte Co., whose current mailing address is 4750 North Bonanza Avenue, Tucson, Arizona, 85749. The general course of this claim is East - West, and it is situated in Pinal County, Arizona. This claim is 1500 feet in length and 600 feet in width. This claim runs from the location monument on which this location notice is posted approximately 30 feet in an easterly direction to the East end line and 1470 feet in a westerly direction to the West end line. This claim is marked by six additional monuments, one at each corner and one at the center of each end line.

The location monument on which this notice is posted is situated within Section 26, Township 8 South, Range 18 East, Gila and Salt River Baseline and Meridian, Arizona, and this claim occupies the following quarter section(s), section(s), Township, and Range:

Quarter Section	Section	Township	Range
<u>1/4</u>	<u>Section</u>	<u>8 South</u>	<u>18 East</u>
<u>1/4</u>	<u>Section</u>	<u>8 South</u>	<u>18 East</u>
<u>SE 1/4</u>	<u>26 Section</u>	<u>8 South</u>	<u>18 East</u>
<u>SW 1/4</u>	<u>26 Section</u>	<u>8 South</u>	<u>18 East</u>

The northeast corner of this claim is 3500 feet South and 1400 feet West of the northeast corner of Section 26, Township 8 South, Range 18 East, Gila and Salt River Baseline and Meridian.

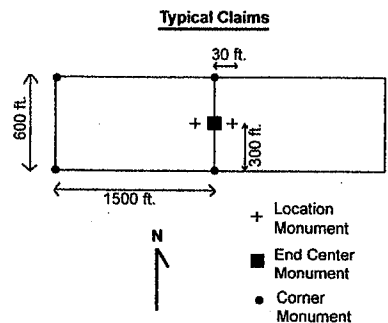
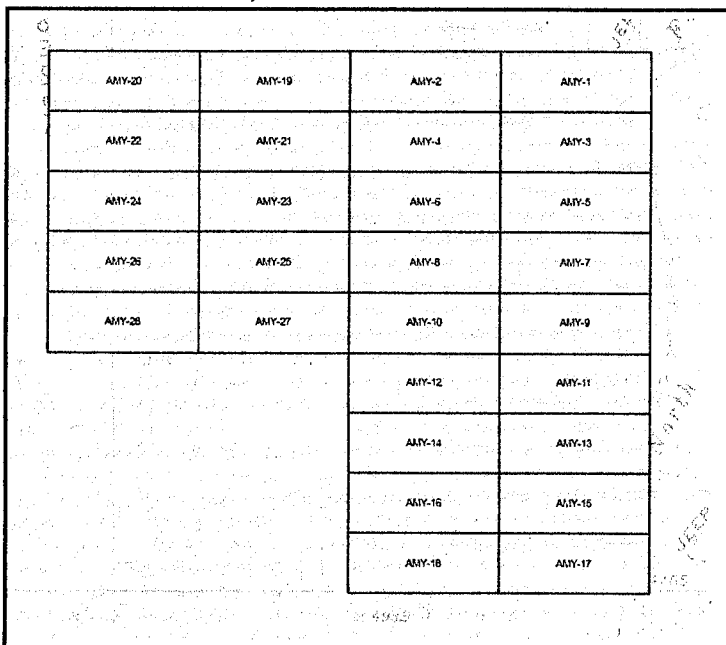
DATED AND POSTED on the ground this 26th day of November, 2012, at 1:47 p.m.

Timothy Marsh
Timothy Marsh

RECEIVED
B.L.M. AZ STATE OFFICE
2012 DEC - 7 P 1:25
PHOENIX, AZ

ANCH 20243

T. 8 S., R. 18 E. G&SRBM



Scale: 1 inch = 2,000 feet

The above map depicts the AMY-14 lode mining claim, which is located in Section 26, Township 8 South, Range 18 East, Gila and Salt River Baseline and Meridian, Pinal County, Arizona. The claim corners, end centers, and location monuments are marked by 2 inch by 2 inch by 5-foot wooden posts with aluminum tags. The bearings and distances between claim corners are as depicted on the map.

OK

When recorded return to:
Timothy Marsh
4750 North Bonanza Avenue
Tucson, AZ 85749



OFFICIAL RECORDS OF
PINAL COUNTY RECORDER

DATE/TIME: 12/03/2012 1230
FEE: \$10.00
PAGES: 1
FEE NUMBER: 2012-103565



LOCATION NOTICE FOR LODE MINING CLAIM

NOTICE IS HEREBY GIVEN that the AMY-16 lode mining claim has been located by Timothy Marsh, Copper Fox Sombrero Butte Co., whose current mailing address is 4750 North Bonanza Avenue, Tucson, Arizona, 85749. The general course of this claim is East - West, and it is situated in Pinal County, Arizona. This claim is 1500 feet in length and 600 feet in width. This claim runs from the location monument on which this location notice is posted approximately 30 feet in an easterly direction to the East end line and 1470 feet in a westerly direction to the West end line. This claim is marked by six additional monuments, one at each corner and one at the center of each end line.

The location monument on which this notice is posted is situated within Section 26, Township 8 South, Range 18 East, Gila and Salt River Baseline and Meridian, Arizona, and this claim occupies the following quarter section(s), section(s), Township, and Range:

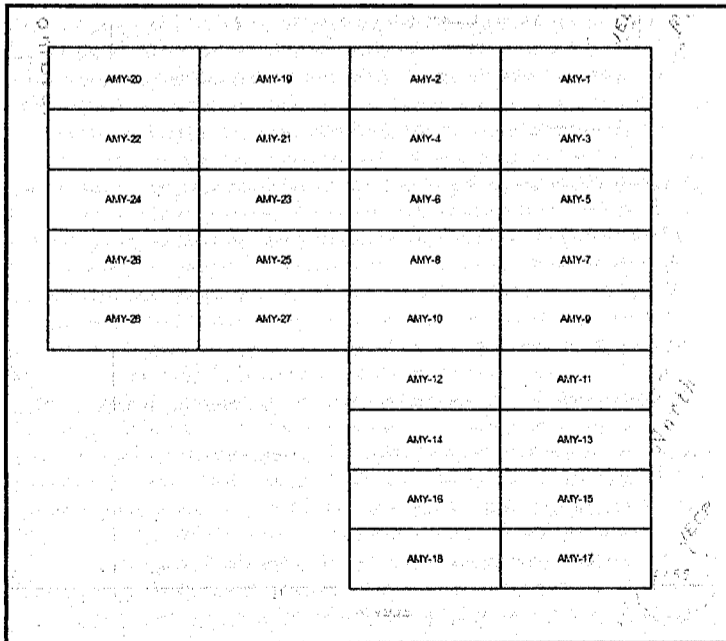
Quarter Section	Section	Township	Range
<u> </u> 1/4	<u> </u> Section	8 South	18 East
<u> </u> 1/4	<u> </u> Section	8 South	18 East
<u>SE</u> 1/4	<u>26</u> Section	8 South	18 East
<u>SW</u> 1/4	<u>26</u> Section	8 South	18 East

The northeast corner of this claim is 4100 feet South and 1400 feet West of the northeast corner of Section 26, Township 8 South, Range 18 East, Gila and Salt River Baseline and Meridian.

DATED AND POSTED on the ground this 21st day of November, 2012, at 2:00 p.m.

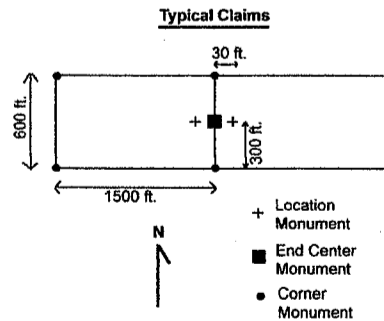
Timothy Marsh

T. 8 S., R. 18 E. G&SRBM



RECEIVED
D.L.H. AZ STATE OFFICE
2012 DEC -7 P 1:25
PHOENIX, AZ

AMCH 20244



Scale: 1 inch = 2,000 feet

The above map depicts the AMY-16 lode mining claim, which is located in Section 26, Township 8 South, Range 18 East, Gila and Salt River Baseline and Meridian, Pinal County, Arizona. The claim corners, end centers, and location monuments are marked by 2 inch by 2 inch by 5-foot wooden posts with aluminum tags. The bearings and distances between claim corners are as depicted on the map.

OK

When recorded return to:
Timothy Marsh
4750 North Bonanza Avenue
Tucson, AZ 85749



OFFICIAL RECORDS OF
PINAL COUNTY RECORDER

DATE/TIME: 12/03/2012 1230
FEE: \$10.00
PAGES: 1
FEE NUMBER: 2012-103566



LOCATION NOTICE FOR LODE MINING CLAIM

NOTICE IS HEREBY GIVEN that the AMY-18 lode mining claim has been located by Timothy Marsh, Copper Fox Sombrero Butte Co., whose current mailing address is 4750 North Bonanza Avenue, Tucson, Arizona, 85749. The general course of this claim is East - West, and it is situated in Pinal County, Arizona. This claim is 1500 feet in length and 600 feet in width. This claim runs from the location monument on which this location notice is posted approximately 30 feet in an easterly direction to the East end line and 1470 feet in a westerly direction to the West end line. This claim is marked by six additional monuments, one at each corner and one at the center of each end line.

The location monument on which this notice is posted is situated within Section 26, Township 8 South, Range 18 East, Gila and Salt River Baseline and Meridian, Arizona, and this claim occupies the following quarter section(s), section(s), Township, and Range:

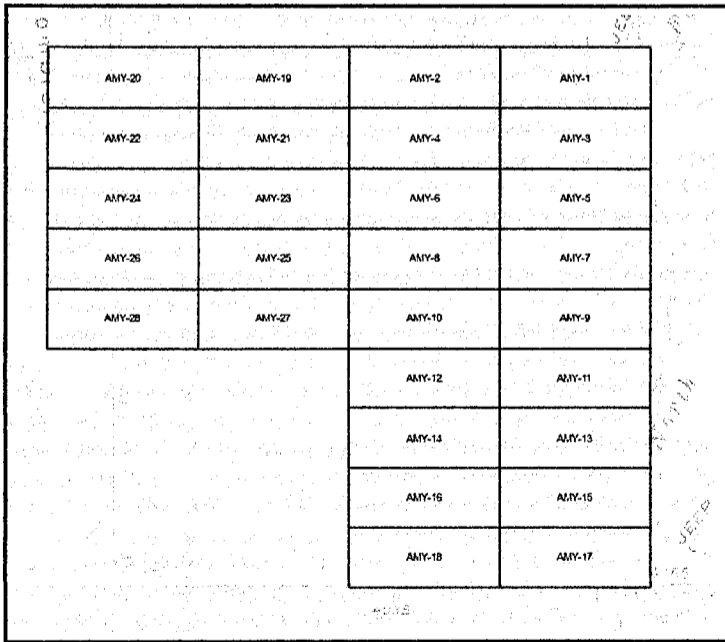
Quarter Section	Section	Township	Range
<u>NE</u> 1/4	<u>35</u> Section	8 South	18 East
<u>NW</u> 1/4	<u>35</u> Section	8 South	18 East
<u>SE</u> 1/4	<u>26</u> Section	8 South	18 East
<u>SW</u> 1/4	<u>26</u> Section	8 South	18 East

The northeast corner of this claim is 4700 feet South and 1400 feet West of the northeast corner of Section 26, Township 8 South, Range 18 East, Gila and Salt River Baseline and Meridian.

DATED AND POSTED on the ground this 26th day of November, 2012, at 2:31 p.m.

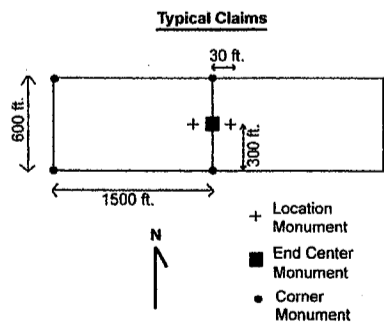
Timothy Marsh
Timothy Marsh

T. 8 S., R. 18 E. G&SRBM



RECEIVED
B.L.M. AZ STATE OFFICE
2012 DEC - 7 P 1: 25
PHOENIX, AZ

ATTORNEY GENERAL



Scale: 1 inch = 2,000 feet

The above map depicts the AMY-18 lode mining claim, which is located in Section 26, Township 8 South, Range 18 East, Gila and Salt River Baseline and Meridian, Pinal County, Arizona. The claim corners, end centers, and location monuments are marked by 2 inch by 2 inch by 5-foot wooden posts with aluminum tags. The bearings and distances between claim corners are as depicted on the map.

OK

When recorded return:
Timothy Marsh
4750 North Bonanza Avenue
Tucson, AZ 85749



OFFICIAL RECORDS OF
PINAL COUNTY RECORDER

DATE/TIME: 12/03/2012 1230
FEE: \$10.00
PAGES: 1
FEE NUMBER: 2012-103567



LOCATION NOTICE FOR LODE MINING CLAIM

NOTICE IS HEREBY GIVEN that the AMY-19 lode mining claim has been located by Timothy Marsh, Copper Fox Sombrero Butte Co., whose current mailing address is 4750 North Bonanza Avenue, Tucson, Arizona, 85749. The general course of this claim is East - West, and it is situated in Pinal County, Arizona. This claim is 1500 feet in length and 600 feet in width. This claim runs from the location monument on which this location notice is posted approximately 1470 feet in an easterly direction to the East end line and 30 feet in a westerly direction to the West end line. This claim is marked by six additional monuments, one at each corner and one at the center of each end line.

The location monument on which this notice is posted is situated within Section 26, Township 8 South, Range 18 East, Gila and Salt River Baseline and Meridian, Arizona, and this claim occupies the following quarter section(s), section(s), Township, and Range:

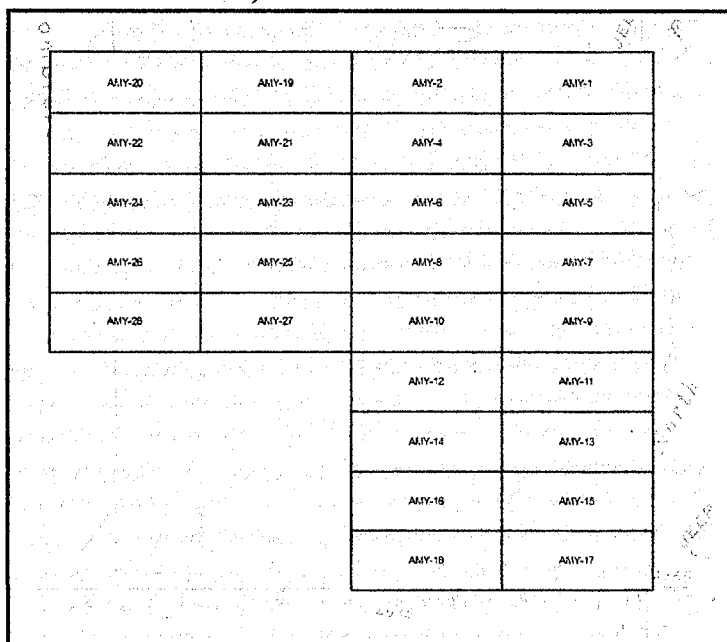
Quarter Section	Section	Township	Range
<u>1/4</u>	<u>Section</u>	<u>8 South</u>	<u>18 East</u>
<u>NW 1/4</u>	<u>26 Section</u>	<u>8 South</u>	<u>18 East</u>
<u>1/4</u>	<u>Section</u>	<u>8 South</u>	<u>18 East</u>
<u>SW 1/4</u>	<u>23 Section</u>	<u>8 South</u>	<u>18 East</u>

The northeast corner of this claim is 50 feet North and 2900 feet West of the northeast corner of Section 26, Township 8 South, Range 18 East, Gila and Salt River Baseline and Meridian.

DATED AND POSTED on the ground this 28th day of November, 2012, at 11:51 a.m.

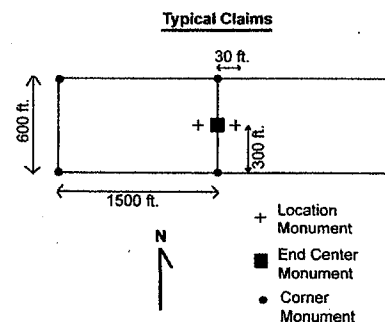
Timothy Marsh

T. 8 S., R. 18 E. G&SRBM



RECEIVED
B.L.M. AZ STATE OFFICE
2012 DEC -7 P 1:25
PHOENIX, AZ

AMC 420216



Scale: 1 inch = 2,000 feet

The above map depicts the AMY-19 lode mining claim, which is located in Section 26, Township 8 South, Range 18 East, Gila and Salt River Baseline and Meridian, Pinal County, Arizona. The claim corners, end centers, and location monuments are marked by 2 inch by 2 inch by 5-foot wooden posts with aluminum tags. The bearings and distances between claim corners are as depicted on the map.

OK

When recorded return to:
Timothy Marsh
4750 North Bonanza Avenue
Tucson, AZ 85749



OFFICIAL RECORDS OF
PINAL COUNTY RECORDER

DATE/TIME: 12/03/2012 1230
FEE: \$10.00
PAGES: 1
FEE NUMBER: 2012-103568



LOCATION NOTICE FOR LODE MINING CLAIM

NOTICE IS HEREBY GIVEN that the AMY-20 lode mining claim has been located by Timothy Marsh, Copper Fox Sombbrero Butte Co., whose current mailing address is 4750 North Bonanza Avenue, Tucson, Arizona, 85749. The general course of this claim is East - West, and it is situated in Pinal County, Arizona. This claim is 1500 feet in length and 600 feet in width. This claim runs from the location monument on which this location notice is posted approximately 30 feet in an easterly direction to the East end line and 1470 feet in a westerly direction to the West end line. This claim is marked by six additional monuments, one at each corner and one at the center of each end line.

The location monument on which this notice is posted is situated within Section 26, Township 8 South, Range 18 East, Gila and Salt River Baseline and Meridian, Arizona, and this claim occupies the following quarter section(s), section(s), Township, and Range:

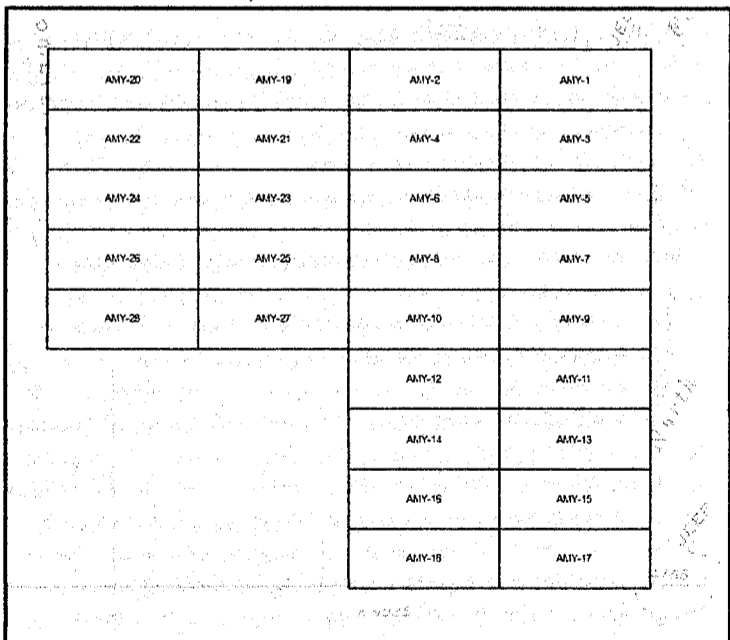
Quarter Section	Section	Township	Range
<u>NE</u> ¼	<u>27</u> Section	8 South	18 East
<u>NW</u> ¼	<u>26</u> Section	8 South	18 East
<u>SE</u> ¼	<u>22</u> Section	8 South	18 East
<u>SW</u> ¼	<u>23</u> Section	8 South	18 East

The northeast corner of this claim is 50 feet North and 4400 feet West of the northeast corner of Section 26, Township 8 South, Range 18 East, Gila and Salt River Baseline and Meridian.

DATED AND POSTED on the ground this 20th day of November, 2012, at 11:52 a.m. / ~~11:52~~

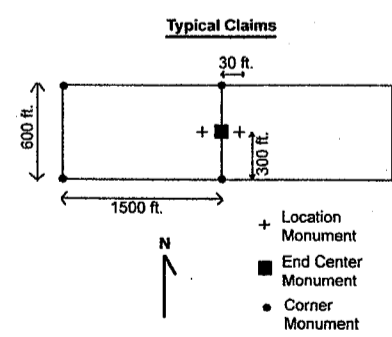
Timothy Marsh

T. 8 S., R. 18 E. G&SRBM



RECEIVED
B.L.M. AZ STATE OFFICE
2012 DEC -7 P 1:25
PHOENIX, AZ

AM01202117



Scale: 1 inch = 2,000 feet
The above map depicts the AMY-20 lode mining claim, which is located in Section 26, Township 8 South, Range 18 East, Gila and Salt River Baseline and Meridian, Pinal County, Arizona. The claim corners, end centers, and location monuments are marked by 2 inch by 2 inch by 5-foot wooden posts with aluminum tags. The bearings and distances between claim corners are as depicted on the map.

OK

When recorded return to:
Timothy Marsh
4750 North Bonanza Avenue
Tucson, AZ 85749



**OFFICIAL RECORDS OF
PINAL COUNTY RECORDER**

DATE/TIME: 12/03/2012 1230
FEE: \$10.00
PAGES: 1
FEE NUMBER: 2012-103569



LOCATION NOTICE FOR LODE MINING CLAIM

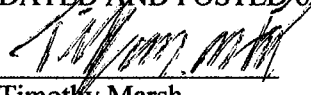
NOTICE IS HEREBY GIVEN that the AMY-21 lode mining claim has been located by Timothy Marsh, Copper Fox Sombrero Butte Co., whose current mailing address is 4750 North Bonanza Avenue, Tucson, Arizona, 85749. The general course of this claim is East - West, and it is situated in Pinal County, Arizona. This claim is 1500 feet in length and 600 feet in width. This claim runs from the location monument on which this location notice is posted approximately 1470 feet in an easterly direction to the East end line and 30 feet in a westerly direction to the West end line. This claim is marked by six additional monuments, one at each corner and one at the center of each end line.

The location monument on which this notice is posted is situated within Section 26, Township 8 South, Range 18 East, Gila and Salt River Baseline and Meridian, Arizona, and this claim occupies the following quarter section(s), section(s), Township, and Range:

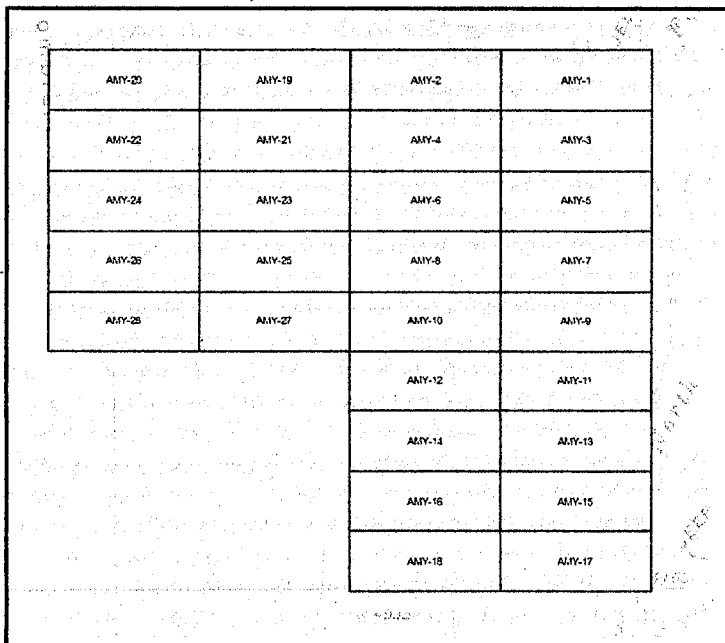
Quarter Section	Section	Township	Range
<u>1/4</u>	Section	8 South	18 East
<u>NW 1/4</u>	<u>26</u> Section	8 South	18 East
<u>1/4</u>	Section	8 South	18 East
<u>1/4</u>	Section	8 South	18 East

The northeast corner of this claim is 500 feet South and 2900 feet West of the northeast corner of Section 26, Township 8 South, Range 18 East, Gila and Salt River Baseline and Meridian.

DATED AND POSTED on the ground this 20th day of November, 2012, at 12:14 p.m.

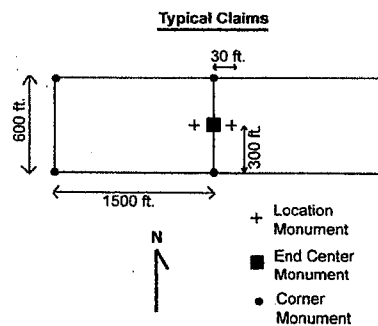

Timothy Marsh

T. 8 S., R. 18 E. G&SRBM



RECEIVED
B.L.M. AZ STATE OFFICE
2012 DEC -7 P 1:25
PHOENIX, AZ

AN0420248



Scale: 1 inch = 2,000 feet

The above map depicts the AMY-21 lode mining claim, which is located in Section 26, Township 8 South, Range 18 East, Gila and Salt River Baseline and Meridian, Pinal County, Arizona. The claim corners, end centers, and location monuments are marked by 2 inch by 2 inch by 5-foot wooden posts with aluminum tags. The bearings and distances between claim corners are as depicted on the map.

OK

When recorded return to:
Timothy Marsh
4750 North Bonanza Avenue
Tucson, AZ 85749



OFFICIAL RECORDS OF
PINAL COUNTY RECORDER

DATE/TIME: 12/03/2012 1230
FEE: \$10.00
PAGES: 1
FEE NUMBER: 2012-103570



LOCATION NOTICE FOR LODE MINING CLAIM

NOTICE IS HEREBY GIVEN that the AMY-22 lode mining claim has been located by Timothy Marsh, Copper Fox Sombrero Butte Co., whose current mailing address is 4750 North Bonanza Avenue, Tucson, Arizona, 85749. The general course of this claim is East - West, and it is situated in Pinal County, Arizona. This claim is 1500 feet in length and 600 feet in width. This claim runs from the location monument on which this location notice is posted approximately 30 feet in an easterly direction to the East end line and 1470 feet in a westerly direction to the West end line. This claim is marked by six additional monuments, one at each corner and one at the center of each end line.

The location monument on which this notice is posted is situated within Section 26, Township 8 South, Range 18 East, Gila and Salt River Baseline and Meridian, Arizona, and this claim occupies the following quarter section(s), section(s), Township, and Range:

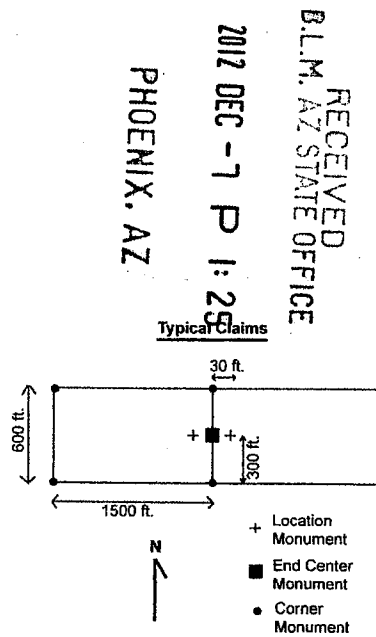
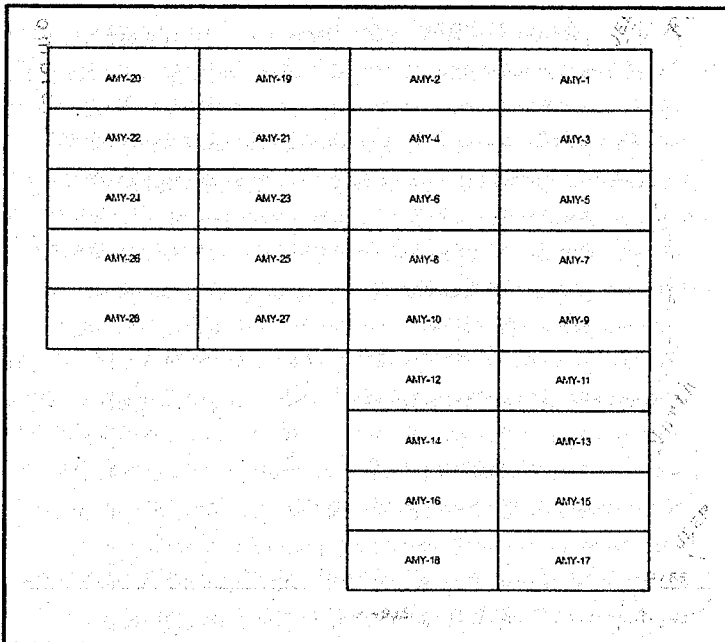
Quarter Section	Section	Township	Range
<u>NE</u> 1/4	<u>27</u> Section	8 South	18 East
<u>NW</u> 1/4	<u>26</u> Section	8 South	18 East
1/4	Section	8 South	18 East
1/4	Section	8 South	18 East

The northeast corner of this claim is 500 feet South and 4400 feet West of the northeast corner of Section 26, Township 8 South, Range 18 East, Gila and Salt River Baseline and Meridian.

DATED AND POSTED on the ground this 2nd day of November, 2012, at 12:15 p.m.

Timothy Marsh
Timothy Marsh

T. 8 S., R. 18 E. G&SRBM



RECEIVED
B.L.M. AZ STATE OFFICE
2012 DEC -7 P 1:25
PHOENIX, AZ

AMCH 20249

Scale: 1 inch = 2,000 feet

The above map depicts the AMY-22 lode mining claim, which is located in Section 26, Township 8 South, Range 18 East, Gila and Salt River Baseline and Meridian, Pinal County, Arizona. The claim corners, end centers, and location monuments are marked by 2 inch by 2 inch by 5-foot wooden posts with aluminum tags. The bearings and distances between claim corners are as depicted on the map.

OK

When recorded return to:
Timothy Marsh
4750 North Bonanza Avenue
Tucson, AZ 85749



OFFICIAL RECORDS OF
PINAL COUNTY RECORDER

DATE/TIME: 12/03/2012 1230
FEE: \$10.00
PAGES: 1
FEE NUMBER: 2012-103571



LOCATION NOTICE FOR LODE MINING CLAIM

NOTICE IS HEREBY GIVEN that the AMY-23 lode mining claim has been located by Timothy Marsh, Copper Fox Sombrero Butte Co., whose current mailing address is 4750 North Bonanza Avenue, Tucson, Arizona, 85749. The general course of this claim is East - West, and it is situated in Pinal County, Arizona. This claim is 1500 feet in length and 600 feet in width. This claim runs from the location monument on which this location notice is posted approximately 1470 feet in an easterly direction to the East end line and 30 feet in a westerly direction to the West end line. This claim is marked by six additional monuments, one at each corner and one at the center of each end line.

The location monument on which this notice is posted is situated within Section 26, Township 8 South, Range 18 East, Gila and Salt River Baseline and Meridian, Arizona, and this claim occupies the following quarter section(s), section(s), Township, and Range:

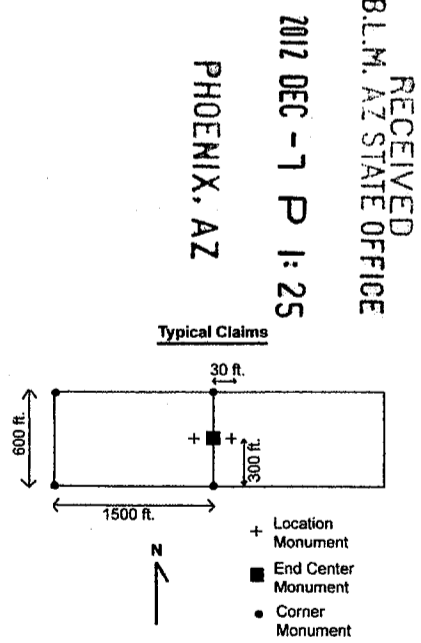
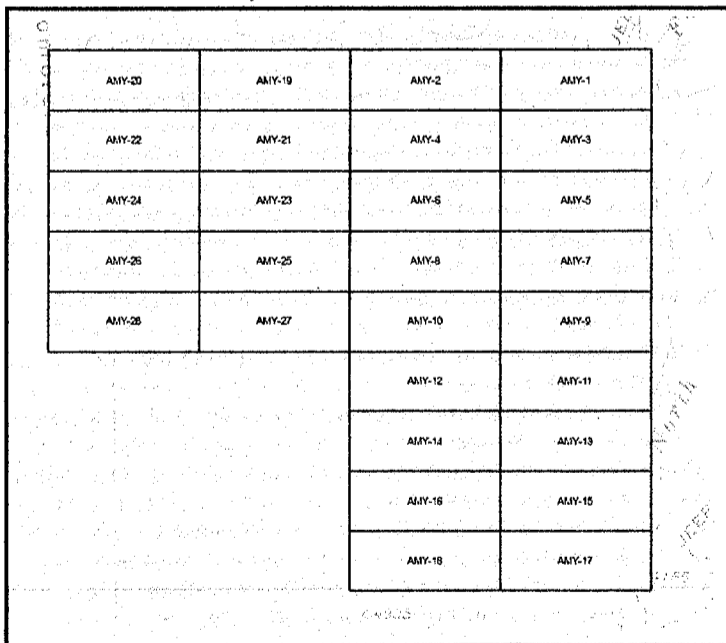
Quarter Section	Section	Township	Range
<u>1/4</u>	Section	8 South	18 East
<u>NW 1/4</u>	<u>26</u> Section	8 South	18 East
<u>1/4</u>	Section	8 South	18 East
<u>1/4</u>	Section	8 South	18 East

The northeast corner of this claim is 1100 feet South and 2900 feet West of the northeast corner of Section 26, Township 8 South, Range 18 East, Gila and Salt River Baseline and Meridian.

DATED AND POSTED on the ground this 28th day of November, 2012, at 1:05 ~~00~~ p.m.

Timothy Marsh

T. 8 S., R. 18 E. G&SRBM



RECEIVED
B.L.M. AZ STATE OFFICE
2012 DEC -7 P 1:25
PHOENIX, AZ

AI10420250

Scale: 1 inch = 2,000 feet

The above map depicts the AMY-23 lode mining claim, which is located in Section 26, Township 8 South, Range 18 East, Gila and Salt River Baseline and Meridian, Pinal County, Arizona. The claim corners, end centers, and location monuments are marked by 2 inch by 2 inch by 5-foot wooden posts with aluminum tags. The bearings and distances between claim corners are as depicted on the map.

OK

When recorded return:
Timothy Marsh
4750 North Bonanza Avenue
Tucson, AZ 85749



OFFICIAL RECORDS OF
PINAL COUNTY RECORDER

DATE/TIME: 12/03/2012 1230
FEE: \$10.00
PAGES: 1
FEE NUMBER: 2012-103572



LOCATION NOTICE FOR LODE MINING CLAIM

NOTICE IS HEREBY GIVEN that the AMY-24 lode mining claim has been located by Timothy Marsh, Copper Fox Sombrero Butte Co., whose current mailing address is 4750 North Bonanza Avenue, Tucson, Arizona, 85749. The general course of this claim is East - West, and it is situated in Pinal County, Arizona. This claim is 1500 feet in length and 600 feet in width. This claim runs from the location monument on which this location notice is posted approximately 30 feet in an easterly direction to the East end line and 1470 feet in a westerly direction to the West end line. This claim is marked by six additional monuments, one at each corner and one at the center of each end line.

The location monument on which this notice is posted is situated within Section 26, Township 8 South, Range 18 East, Gila and Salt River Baseline and Meridian, Arizona, and this claim occupies the following quarter section(s), section(s), Township, and Range:

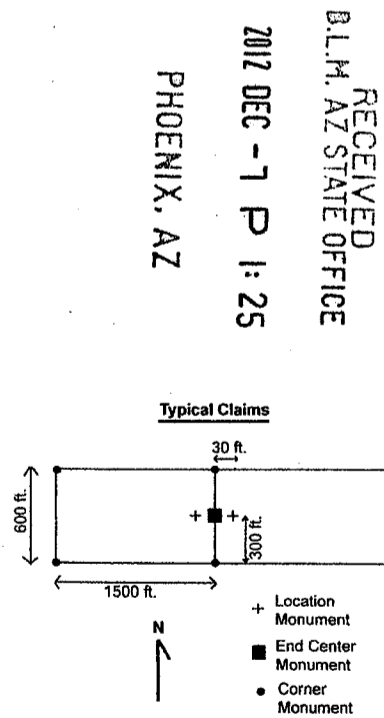
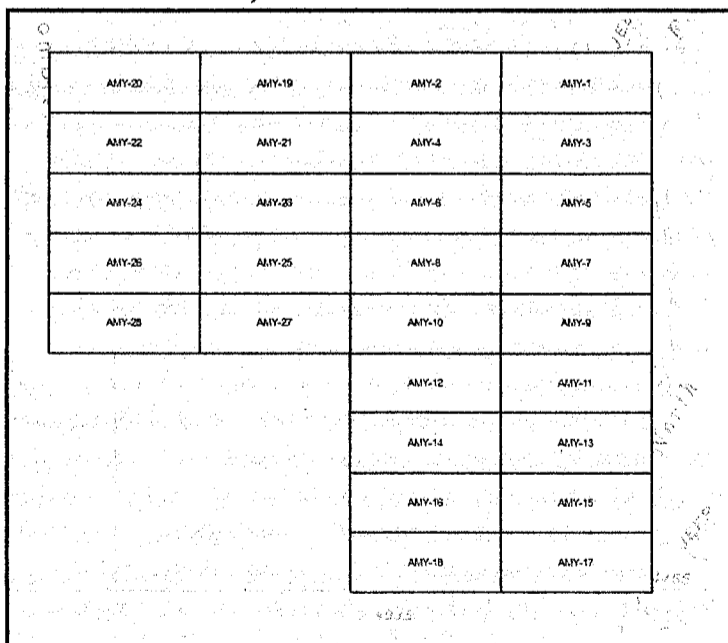
Quarter Section	Section	Township	Range
NE 1/4	27 Section	8 South	18 East
NW 1/4	26 Section	8 South	18 East
1/4	Section	8 South	18 East
1/4	Section	8 South	18 East

The northeast corner of this claim is 1100 feet South and 4400 feet West of the northeast corner of Section 26, Township 8 South, Range 18 East, Gila and Salt River Baseline and Meridian.

DATED AND POSTED on the ground this 28th day of November, 2012, at 1:04 p.m.

Timothy Marsh

T. 8 S., R. 18 E. G&SRBM



Scale: 1 inch = 2,000 feet

The above map depicts the AMY-24 lode mining claim, which is located in Section 26, Township 8 South, Range 18 East, Gila and Salt River Baseline and Meridian, Pinal County, Arizona. The claim corners, end centers, and location monuments are marked by 2 inch by 2 inch by 5-foot wooden posts with aluminum tags. The bearings and distances between claim corners are as depicted on the map.

OK

When recorded return to:
Timothy Marsh
4750 North Bonanza Avenue
Tucson, AZ 85749



OFFICIAL RECORDS OF
PINAL COUNTY RECORDER

DATE/TIME: 12/03/2012 1230
FEE: \$10.00
PAGES: 1
FEE NUMBER: 2012-103573



LOCATION NOTICE FOR LODE MINING CLAIM

NOTICE IS HEREBY GIVEN that the AMY-25 lode mining claim has been located by Timothy Marsh, Copper Fox Sombbrero Butte Co., whose current mailing address is 4750 North Bonanza Avenue, Tucson, Arizona, 85749. The general course of this claim is East - West, and it is situated in Pinal County, Arizona. This claim is 1500 feet in length and 600 feet in width. This claim runs from the location monument on which this location notice is posted approximately 1470 feet in an easterly direction to the East end line and 30 feet in a westerly direction to the West end line. This claim is marked by six additional monuments, one at each corner and one at the center of each end line.

The location monument on which this notice is posted is situated within Section 26, Township 8 South, Range 18 East, Gila and Salt River Baseline and Meridian, Arizona, and this claim occupies the following quarter section(s), section(s), Township, and Range:

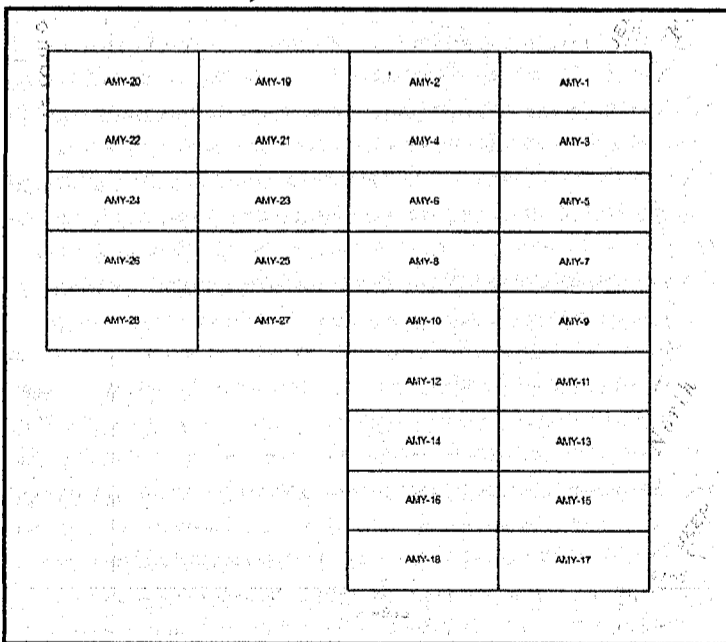
Quarter Section	Section	Township	Range
<u>1/4</u>	<u>Section</u>	<u>8 South</u>	<u>18 East</u>
<u>NW 1/4</u>	<u>26 Section</u>	<u>8 South</u>	<u>18 East</u>
<u>1/4</u>	<u>Section</u>	<u>8 South</u>	<u>18 East</u>
<u>1/4</u>	<u>Section</u>	<u>8 South</u>	<u>18 East</u>

The northeast corner of this claim is 1700 feet South and 2900 feet West of the northeast corner of Section 26, Township 8 South, Range 18 East, Gila and Salt River Baseline and Meridian.

DATED AND POSTED on the ground this 28th day of November, 2012, at 1:53 p.m.

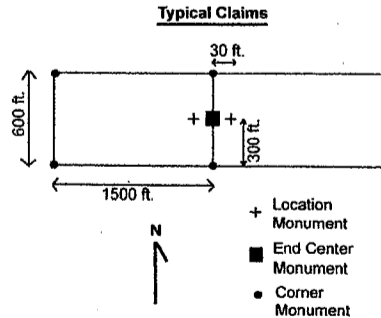
Timothy Marsh
Timothy Marsh

T. 8 S., R. 18 E. G&SRBM



RECEIVED
B.L.M. AZ STATE OFFICE
2012 DEC - 7 P 1:25
PHOENIX, AZ

AMC420252



Scale: 1 inch = 2,000 feet

The above map depicts the AMY-25 lode mining claim, which is located in Section 26, Township 8 South, Range 18 East, Gila and Salt River Baseline and Meridian, Pinal County, Arizona. The claim corners, end centers, and location monuments are marked by 2 inch by 2 inch by 5-foot wooden posts with aluminum tags. The bearings and distances between claim corners are as depicted on the map.

DR

When recorded return to:
Timothy Marsh
4750 North Bonanza Avenue
Tucson, AZ 85749



OFFICIAL RECORDS OF
PINAL COUNTY RECORDER

DATE/TIME: 12/03/2012 1230
FEE: \$10.00
PAGES: 1
FEE NUMBER: 2012-103574



LOCATION NOTICE FOR LODE MINING CLAIM

NOTICE IS HEREBY GIVEN that the AMY-26 lode mining claim has been located by Timothy Marsh, Copper Fox Sombrero Butte Co., whose current mailing address is 4750 North Bonanza Avenue, Tucson, Arizona, 85749. The general course of this claim is East - West, and it is situated in Pinal County, Arizona. This claim is 1500 feet in length and 600 feet in width. This claim runs from the location monument on which this location notice is posted approximately 30 feet in an easterly direction to the East end line and 1470 feet in a westerly direction to the West end line. This claim is marked by six additional monuments, one at each corner and one at the center of each end line.

The location monument on which this notice is posted is situated within Section 26, Township 8 South, Range 18 East, Gila and Salt River Baseline and Meridian, Arizona, and this claim occupies the following quarter section(s), section(s), Township, and Range:

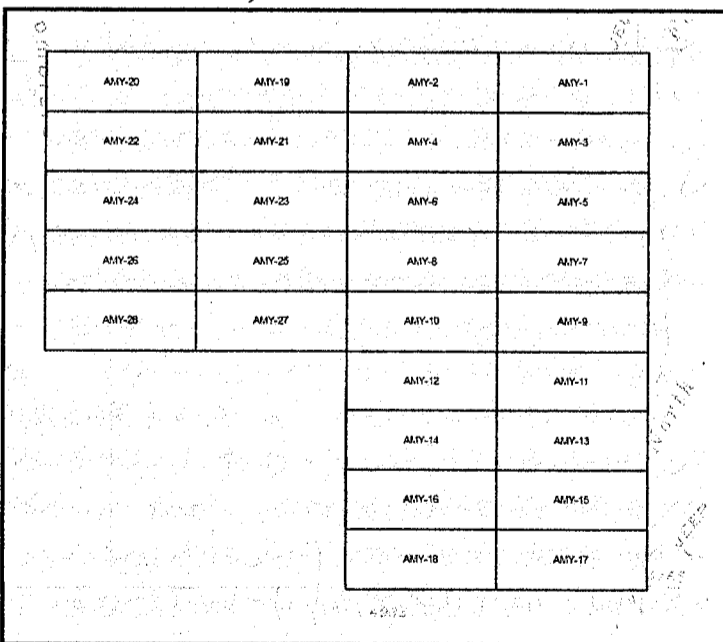
Quarter Section	Section	Township	Range
NE 1/4	27 Section	8 South	18 East
NW 1/4	26 Section	8 South	18 East
1/4	Section	8 South	18 East
1/4	Section	8 South	18 East

The northeast corner of this claim is 1700 feet South and 4400 feet West of the northeast corner of Section 26, Township 8 South, Range 18 East, Gila and Salt River Baseline and Meridian.

DATED AND POSTED on the ground this 28th day of November, 2012, at 1:54 ~~00~~ p.m.

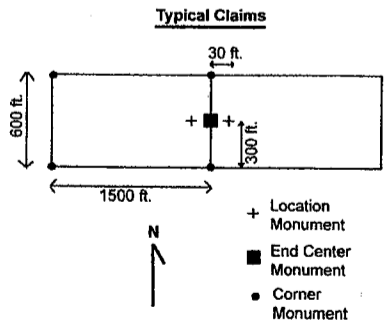
Timothy Marsh

T. 8 S., R. 18 E. G&SRBM



RECEIVED
B.L.M. AZ STATE OFFICE
2012 DEC -7 P 1:24
PHOENIX, AZ

AMC020253



Scale: 1 inch = 2,000 feet

The above map depicts the AMY-26 lode mining claim, which is located in Section 26, Township 8 South, Range 18 East, Gila and Salt River Baseline and Meridian, Pinal County, Arizona. The claim corners, end centers, and location monuments are marked by 2 inch by 2 inch by 5-foot wooden posts with aluminum tags. The bearings and distances between claim corners are as depicted on the map.

OK

When recorded return:
Timothy Marsh
4750 North Bonanza Avenue
Tucson, AZ 85749



OFFICIAL RECORDS OF
PINAL COUNTY RECORDER

DATE/TIME: 12/03/2012 1230
FEE: \$10.00
PAGES: 1
FEE NUMBER: 2012-103575



LOCATION NOTICE FOR LODE MINING CLAIM

NOTICE IS HEREBY GIVEN that the AMY-27 lode mining claim has been located by Timothy Marsh, Copper Fox Sombrero Butte Co., whose current mailing address is 4750 North Bonanza Avenue, Tucson, Arizona, 85749. The general course of this claim is East - West, and it is situated in Pinal County, Arizona. This claim is 1500 feet in length and 600 feet in width. This claim runs from the location monument on which this location notice is posted approximately 1470 feet in an easterly direction to the East end line and 30 feet in a westerly direction to the West end line. This claim is marked by six additional monuments, one at each corner and one at the center of each end line.

The location monument on which this notice is posted is situated within Section 26, Township 8 South, Range 18 East, Gila and Salt River Baseline and Meridian, Arizona, and this claim occupies the following quarter section(s), section(s), Township, and Range:

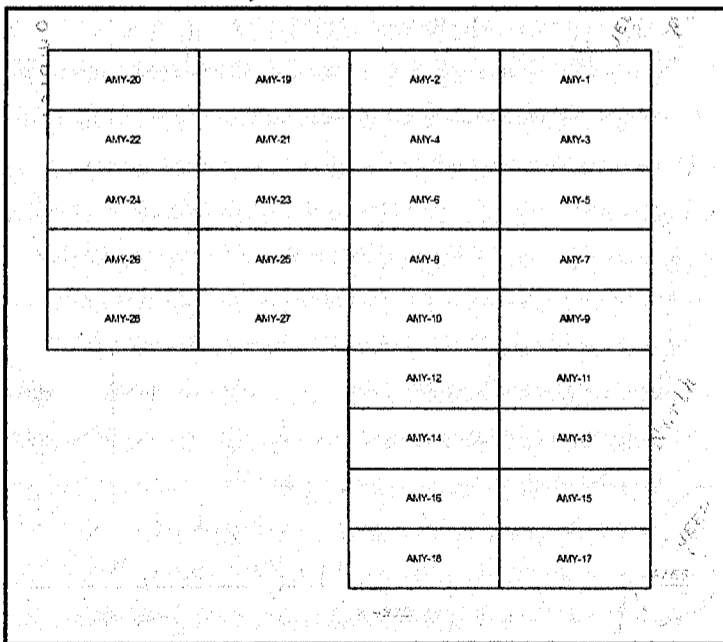
Quarter Section	Section	Township	Range
<u>1/4</u>	<u>Section</u>	<u>8 South</u>	<u>18 East</u>
<u>NW 1/4</u>	<u>26</u> Section	<u>8 South</u>	<u>18 East</u>
<u>1/4</u>	<u>Section</u>	<u>8 South</u>	<u>18 East</u>
<u>SW 1/4</u>	<u>26</u> Section	<u>8 South</u>	<u>18 East</u>

The northeast corner of this claim is 2300 feet South and 2900 feet West of the northeast corner of Section 26, Township 8 South, Range 18 East, Gila and Salt River Baseline and Meridian.

DATED AND POSTED on the ground this 28th day of November, 2012, at 2:37 ~~am~~ /p.m.

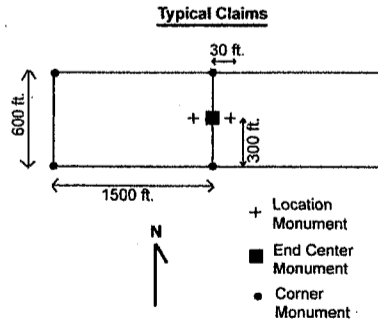
Timothy Marsh

T. 8 S., R. 18 E. G&SRBM



RECEIVED
B.L.M. AZ STATE OFFICE
2012 DEC - 1 P 1:24
PHOENIX, AZ

AIHC420254



Scale: 1 inch = 2,000 feet

The above map depicts the AMY-27 lode mining claim, which is located in Section 26, Township 8 South, Range 18 East, Gila and Salt River Baseline and Meridian, Pinal County, Arizona. The claim corners, end centers, and location monuments are marked by 2 inch by 2 inch by 5-foot wooden posts with aluminum tags. The bearings and distances between claim corners are as depicted on the map.

OK

When recorded return to:
Timothy Marsh
4750 North Bonanza Avenue
Tucson, AZ 85749



OFFICIAL RECORDS OF
PINAL COUNTY RECORDER

DATE/TIME: 12/03/2012 1230
FEE: \$10.00
PAGES: 1
FEE NUMBER: 2012-103576



LOCATION NOTICE FOR LODE MINING CLAIM

NOTICE IS HEREBY GIVEN that the AMY-28 lode mining claim has been located by Timothy Marsh, Copper Fox Sombbrero Butte Co., whose current mailing address is 4750 North Bonanza Avenue, Tucson, Arizona, 85749. The general course of this claim is East - West, and it is situated in Pinal County, Arizona. This claim is 1500 feet in length and 600 feet in width. This claim runs from the location monument on which this location notice is posted approximately 30 feet in an easterly direction to the East end line and 1470 feet in a westerly direction to the West end line. This claim is marked by six additional monuments, one at each corner and one at the center of each end line.

The location monument on which this notice is posted is situated within Section 26, Township 8 South, Range 18 East, Gila and Salt River Baseline and Meridian, Arizona, and this claim occupies the following quarter section(s), section(s), Township, and Range:

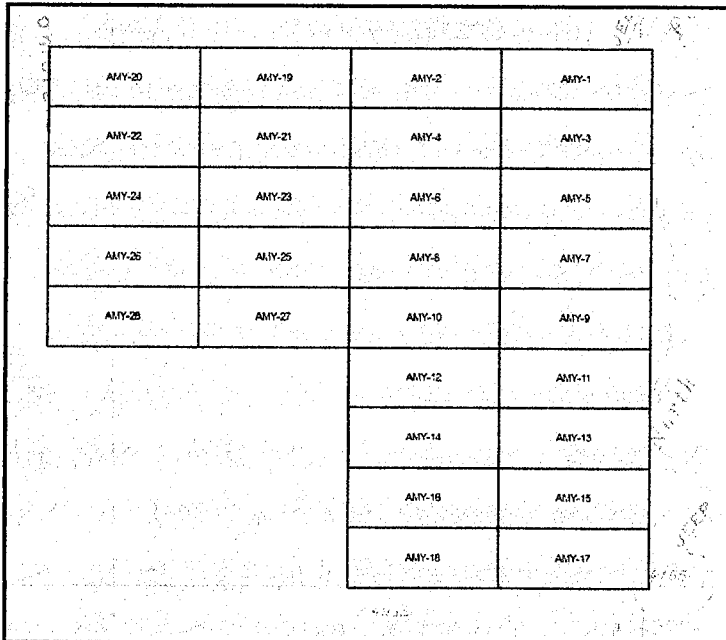
Quarter Section	Section	Township	Range
<u>NE</u> 1/4	<u>27</u> Section	8 South	18 East
<u>NW</u> 1/4	<u>26</u> Section	8 South	18 East
<u>SE</u> 1/4	<u>27</u> Section	8 South	18 East
<u>SW</u> 1/4	<u>26</u> Section	8 South	18 East

The northeast corner of this claim is 2300 feet South and 4400 feet West of the northeast corner of Section 26, Township 8 South, Range 18 East, Gila and Salt River Baseline and Meridian.

DATED AND POSTED on the ground this 2nd day of November, 2012, at 2:36 p.m.

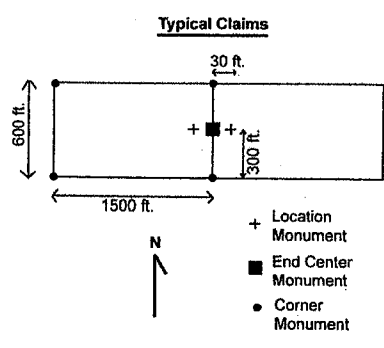
Timothy Marsh
Timothy Marsh

T. 8 S., R. 18 E. G&SRBM



RECEIVED
B.L.M. AZ STATE OFFICE
2012 DEC -7 P 1:24
PHOENIX, AZ

AMC120255




Scale: 1 inch = 2,000 feet

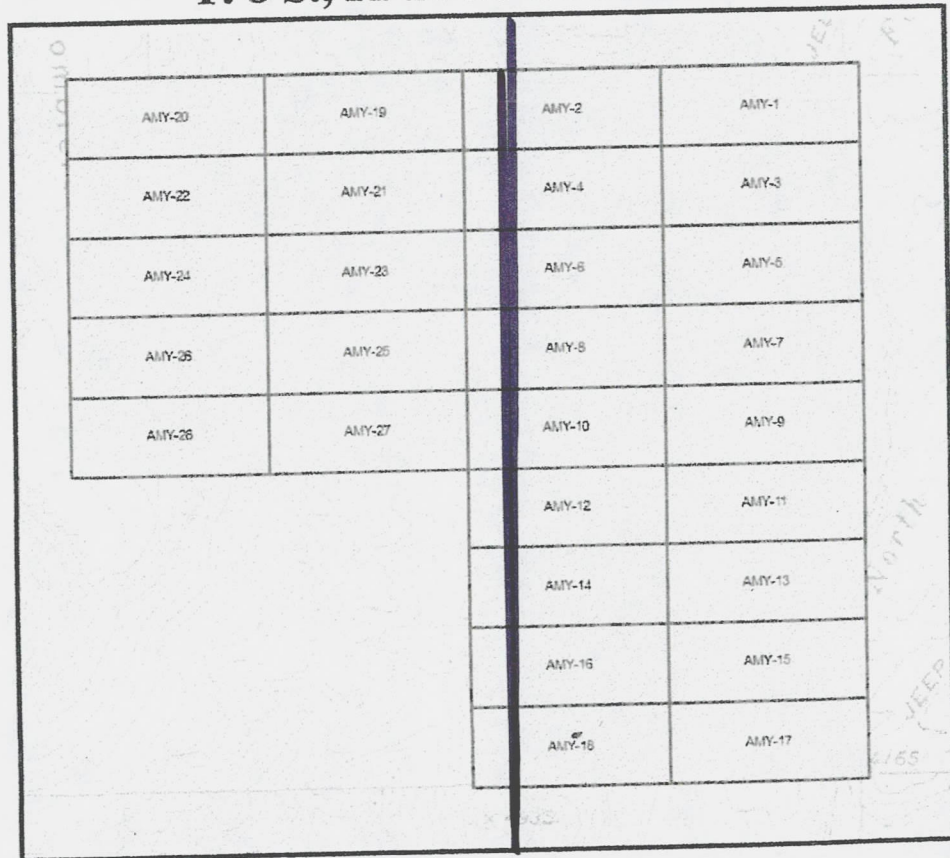
The above map depicts the AMY-28 lode mining claim, which is located in Section 26, Township 8 South, Range 18 East, Gila and Salt River Baseline and Meridian, Pinal County, Arizona. The claim corners, end centers, and location monuments are marked by 2 inch by 2 inch by 5-foot wooden posts with aluminum tags. The bearings and distances between claim corners are as depicted on the map.

The northeast corner of this claim is 100 feet east and 100 feet of Section 26, Township 8 South, Range 18 East, Gila and Salt River B.

DATED AND POSTED on the ground this 24th day of November,


Timothy Marsh

T. 8 S., R. 18 E. G&SRBM



Scale: 1 inch = 2,000 feet

The above map depicts the AMY-1 lode mining claim, which is located in Section 26, Township 8 South, Range 18 East, Gila and Salt River Baseline and Meridian. Pin corners, end centers, and location monuments are marked by 2 inch by 2 inch aluminum tags. The bearings and distances between claim corners are as follows:

RUN TIME: 01:17 PM

Adm State: AZ

UNITED STATES DEPARTMENT OF INTERIOR
BUREAU OF LAND MANAGEMENT
GEOGRAPHIC REPORT WITH LAND
Sorted by Meridian Township Range

RUN DATE: 12/07/2012
Page 1 of 1

Serial Number: AZA 017845

Total Case Acres: 13.800

<u>Casetype</u>	<u>Case Disp</u>				<u>Sect</u>	<u>Sur Typ</u>	<u>Sur Num</u>	<u>Suff</u>	<u>Subdivision</u>	<u>Act Pend</u>
281007	AUTHORIZED	14	0080S	0180E	022	ALIQ			NENE;	
					023	ALIQ			N2NW;	

Serial Number: AZA 020347BF

Total Case Acres: 70,956.170

<u>Casetype</u>	<u>Case Disp</u>				<u>Sect</u>	<u>Sur Typ</u>	<u>Sur Num</u>	<u>Suff</u>	<u>Subdivision</u>	<u>Act Pend</u>
221006	AUTHORIZED	14	0080S	0180E	025	ALIQ			W2SE;	

DEPARTMENT OF INTERIOR
BUREAU OF LAND MANAGEMENT

Input Parameters for Geographic Report with Land

System Id = CR

Admin State = AZ

Geo State =

Casetype Begins With

Case Disp Txt = AUTHORIZED, CANCELLED, EXPIRED, PENDING, REJECTED, RELINQUISHED, VOID, WITHDRAWN

Mer Twp Rng = 14 0080S 0180E

Section = 022, 023, 024, 025, 026, 027, 035, 999

Mtrs =

Commodity =

Commodity Txt =

Pending Org =

Pend Org Decode =

Total Rows Returned: 3

